

**SIoux COUNTY, IOWA
GPS CONTROL MONUMENT
IOWA NORTH ZONE (1401)
HORIZONTAL DATUM - NAD 83 (1996)
VERTICAL DATUM - NAVD 1988**

GPS POINT NUMBER **G127**

	US SURVEY FEET	METRIC
Northing:	3836790.112	1169455.965
Easting:	4243485.745	1293417.042
Elevation:	1329.785	405.319
Ellipsoid Height:	1242.625	378.753
Geoid 99 Height:	-87.160	-26.566

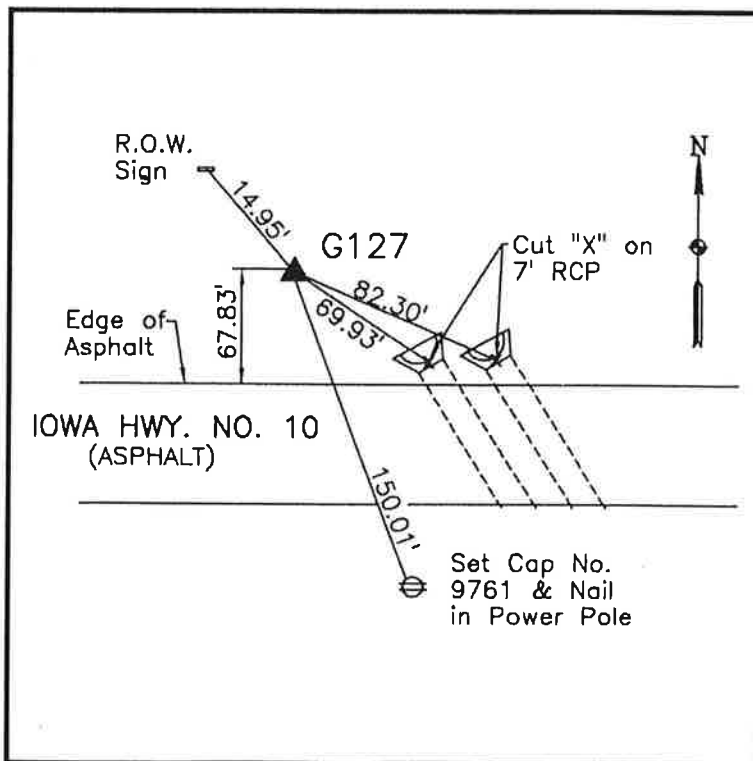
Latitude:	42° 59' 51.65762" N
Longitude:	96° 02' 01.92242" W
Scale Factor:	0.9999619269
Convergence:	-1° 43' 02.3"
Combined Factor:	0.99990264

Description:

Placed 3/4" X 6' - 0" Long
Aluminum Rod with Cap
Stamped G127 and NGS Style
Access Cover 2" Deep

Location:

North side Iowa Highway 10
0.15 mile east of Jay Avenue
Station 68+80 in Section 34,
T95N, R44W.



WHKS & CO.