

**SIoux COUNTY, IOWA
GPS CONTROL MONUMENT
IOWA NORTH ZONE (1401)
HORIZONTAL DATUM - NAD 83 (1996)
VERTICAL DATUM - NAVD 1988**

GPS POINT NUMBER **G128**

	US SURVEY FEET	METRIC
Northing:	3837203.006	1169581.815
Easting:	4226889.175	1288358.397
Elevation:	1387.727	422.980
Ellipsoid Height:	1300.900	396.515
Geoid 99 Height:	-86.827	-26.465

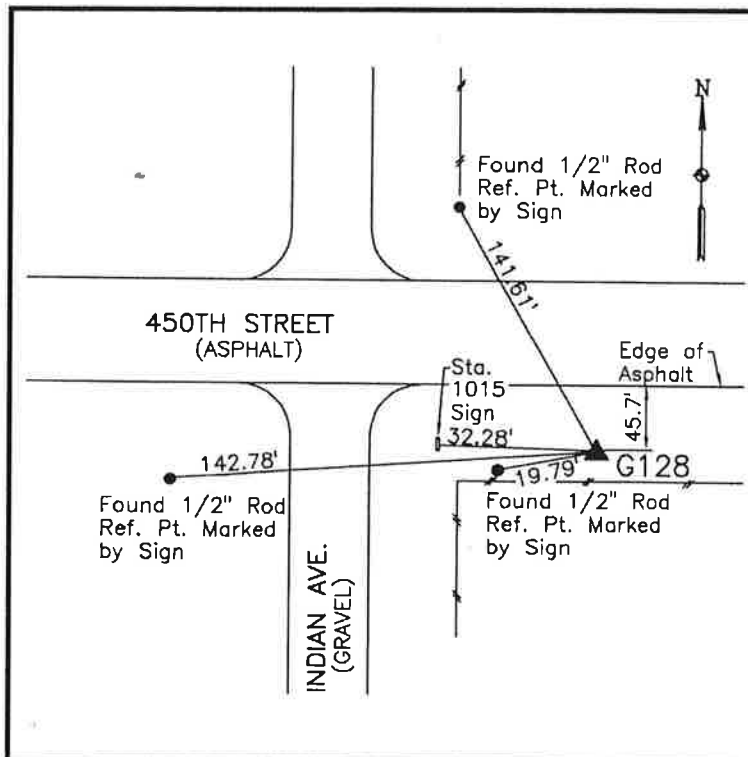
Latitude:	42° 59' 50.76117" N
Longitude:	96° 05' 45.32493" W
Scale Factor:	0.9999619019
Convergence:	-1° 45' 33.7"
Combined Factor:	0.99989984

Description:

Placed 3/4" X 6' - 0" Long Aluminum Rod with Cap Stamped G128 and NGS Style Access Cover 1" Deep

Location:

Southeast side of intersection of Iowa Highway 10 and Indian Avenue Station 1015+30 in Section 6, T94N, R44W.



WHKS & CO.