

**SIOUX COUNTY, IOWA
GPS CONTROL MONUMENT
IOWA NORTH ZONE (1401)
HORIZONTAL DATUM - NAD 83 (1996)
VERTICAL DATUM - NAVD 1988**

GPS POINT NUMBER **G129**

	US SURVEY FEET	METRIC
Northing:	3837623.713	1169710.047
Easting:	4211004.910	1283516.863
Elevation:	1373.834	418.745
Ellipsoid Height:	1287.313	392.374
Geoid 99 Height:	-86.521	-26.372

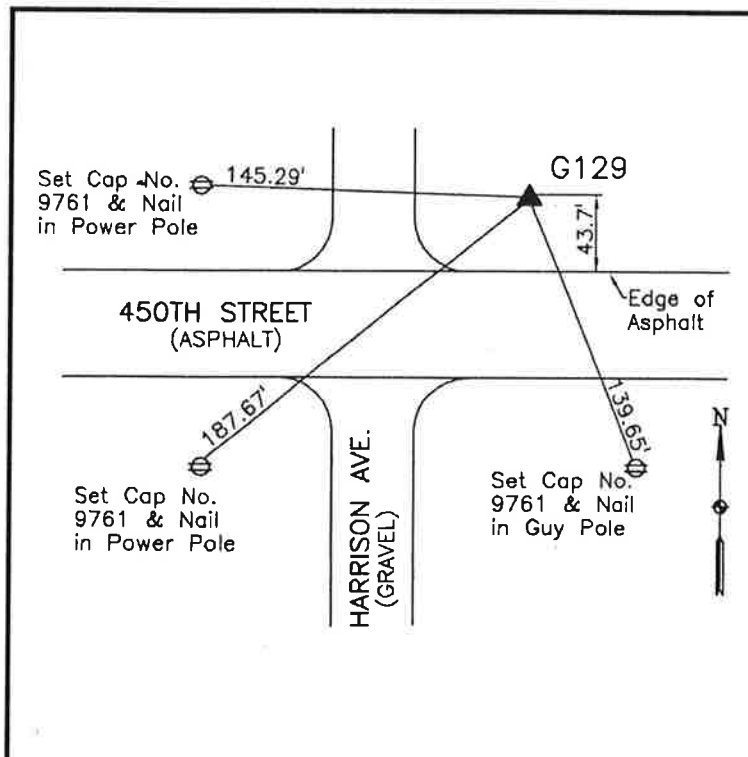
Latitude:	42° 59' 50.04255" N
Longitude:	96° 09' 19.14826" W
Scale Factor:	0.9999618818
Convergence:	-1° 47' 58.7"
Combined Factor:	0.99990047

Description:

Placed 3/4" X 6' - 0" Long Aluminum Rod with Cap Stamped G129 and NGS Style Access Cover 1" Deep

Location:

Northeast side of intersection of Iowa Highway 10 and Harrison Avenue Station 856+35 in Section 34, T95N, R45W.



WHKS & CO.