

**SIoux COUNTY, IOWA  
GPS CONTROL MONUMENT  
IOWA NORTH ZONE (1401)  
HORIZONTAL DATUM - NAD 83 (1996)  
VERTICAL DATUM - NAVD 1988**

GPS POINT NUMBER **G130**

	US SURVEY FEET	METRIC
Northing:	3838090.283	1169852.258
Easting:	4195460.562	1278778.937
Elevation:	1360.196	414.589
Ellipsoid Height:	1273.981	388.310
Geoid 99 Height:	-86.215	-26.278

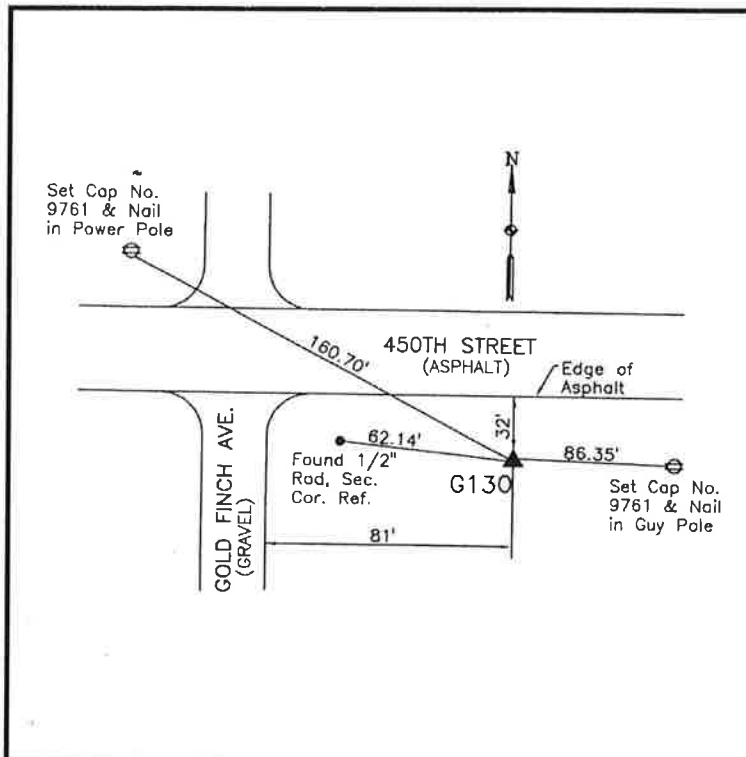
Latitude:	42° 59' 49.77423" N
Longitude:	96° 12' 48.41812" W
Scale Factor:	0.9999618744
Convergence:	-1° 50' 20.5"
Combined Factor:	0.99990109

**Description:**

Placed 3/4" X 6' - 0" Long Aluminum Rod with Cap Stamped G130 and NGS Style Access Cover 1" Deep

**Location:**

Southeast side of intersection of Iowa Highway 10 and Goldfinch Avenue Station 700+55 in Section 6, T94N, R45W.



**WHKS & CO.**