

**SIoux COUNTY, IOWA
GPS CONTROL MONUMENT
IOWA NORTH ZONE (1401)
HORIZONTAL DATUM - NAD 83 (1996)
VERTICAL DATUM - NAVD 1988**

GPS POINT NUMBER **G131**

	US SURVEY FEET	METRIC
Northing:	3838550.420	1169992.508
Easting:	4179280.456	1273847.231
Elevation:	1448.268	441.433
Ellipsoid Height:	1362.332	415.240
Geoid 99 Height:	-85.937	-26.194

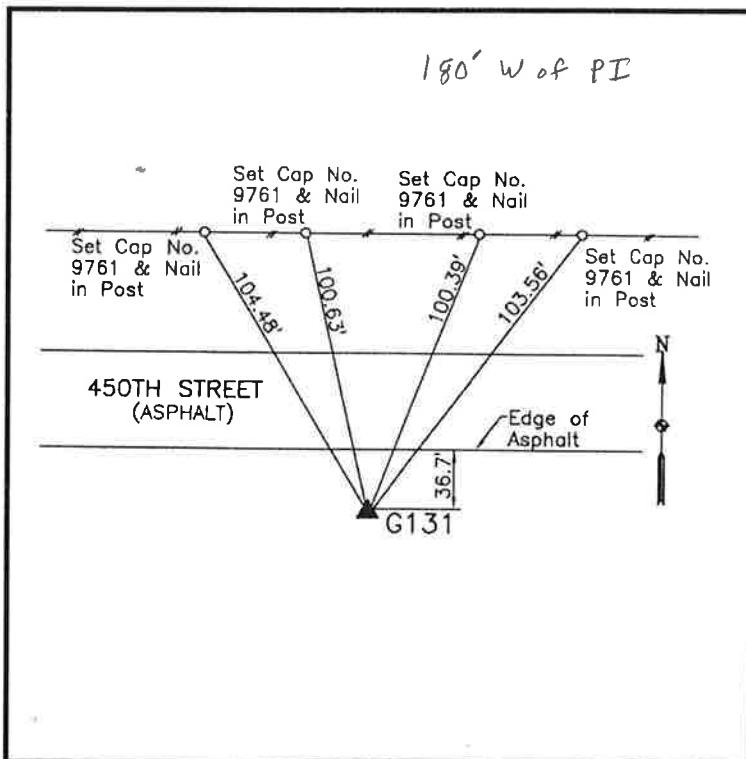
Latitude:	42° 59' 49.13083" N
Longitude:	96° 16' 26.23513" W
Scale Factor:	0.9999618564
Convergence:	-1° 52' 48.1"
Combined Factor:	0.99989686

Description:

Placed 3/4" X 6' - 0" Long
Aluminum Rod with Cap
Stamped G131 and NGS Style
Access Cover 3" Deep

Location:

Southwest side of intersection
of Iowa Highway 10 and Fig
Avenue Station 539+05 in
Section 4 of T94N, R46W.



WHKS & CO.