

**SIoux COUNTY, IOWA
GPS CONTROL MONUMENT
IOWA NORTH ZONE (1401)
HORIZONTAL DATUM - NAD 83 (1996)
VERTICAL DATUM - NAVD 1988**

GPS POINT NUMBER **G132**

	US SURVEY FEET	METRIC
Northing:	3839137.422	1170171.426
Easting:	4163973.062	1269181.528
Elevation:	1391.934	424.262
Ellipsoid Height:	1306.211	398.134
Geoid 99 Height:	-85.723	-26.128

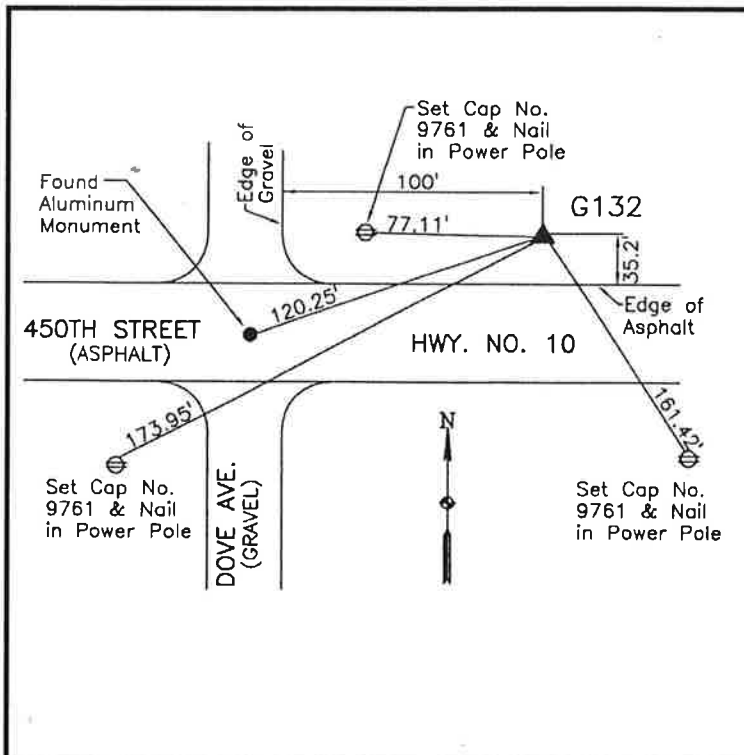
Latitude:	42° 59' 49.91422" N
Longitude:	96° 19' 52.37077" W
Scale Factor:	0.9999618783
Convergence:	-1° 55' 07.8"
Combined Factor:	0.99989956

Description:

Placed 3/4" X 6' - 0" Long Aluminum Rod with Cap Stamped G132 and NGS Style Access Cover 1" Deep

Location:

Northeast side of intersection of Iowa Highway 10 and Dove Avenue Station 385+80 in Section 31, T95N, R46W.



WHKS & CO.