

**SIOUX COUNTY, IOWA  
GPS CONTROL MONUMENT  
IOWA NORTH ZONE (1401)  
HORIZONTAL DATUM - NAD 83 (1996)  
VERTICAL DATUM - NAVD 1988**

GPS POINT NUMBER      **G133**

	US SURVEY FEET	METRIC
Northing:	3839526.937	1170290.151
Easting:	4148074.015	1264335.488
Elevation:	1307.608	398.560
Ellipsoid Height:	1222.109	372.500
Geoid 99 Height:	-85.499	-26.060

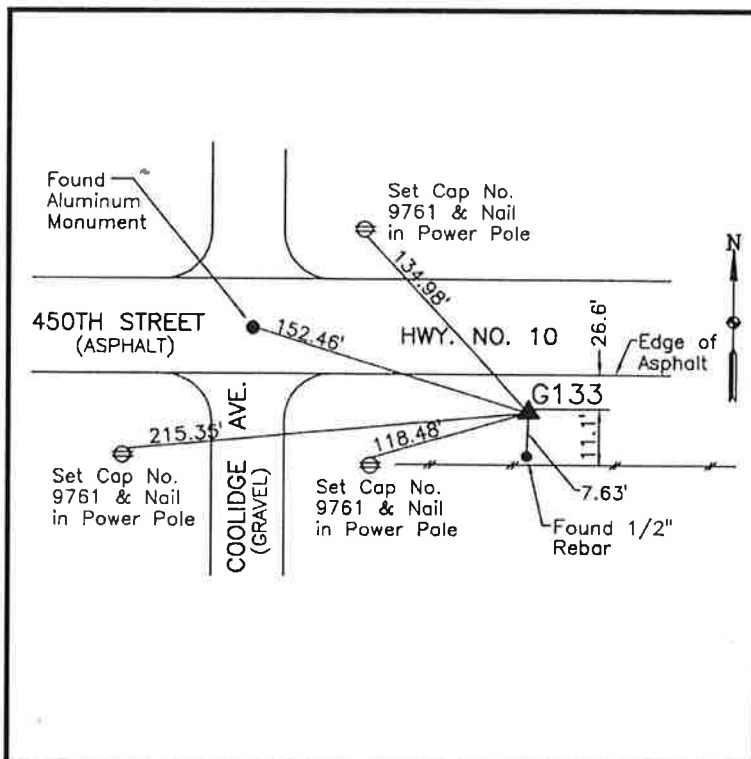
Latitude:	42° 59' 48.44587" N
Longitude:	96° 23' 26.37398" W
Scale Factor:	0.9999618374
Convergence:	-1° 57' 32.9"
Combined Factor:	0.99990353

**Description:**

Placed 3/4" X 6' - 0" Long Aluminum Rod with Cap Stamped G133 and NGS Style Access Cover 1" Deep

**Location:**

Southeast side of intersection of Iowa Highway 10 and Coolidge Avenue Station 226+90 in Section 3, T94N, R47W.



**WHKS & CO.**