

**SIOUX COUNTY, IOWA
GPS CONTROL MONUMENT
IOWA NORTH ZONE (1401)
HORIZONTAL DATUM - NAD 83 (1996)
VERTICAL DATUM - NAVD 1988**

GPS POINT NUMBER **G134**

	US SURVEY FEET	METRIC
Northing:	3840024.863	1170441.919
Easting:	4131896.635	1259404.613
Elevation:	1291.235	393.569
Ellipsoid Height:	1205.984	367.585
Geoid 99 Height:	-85.250	-25.984

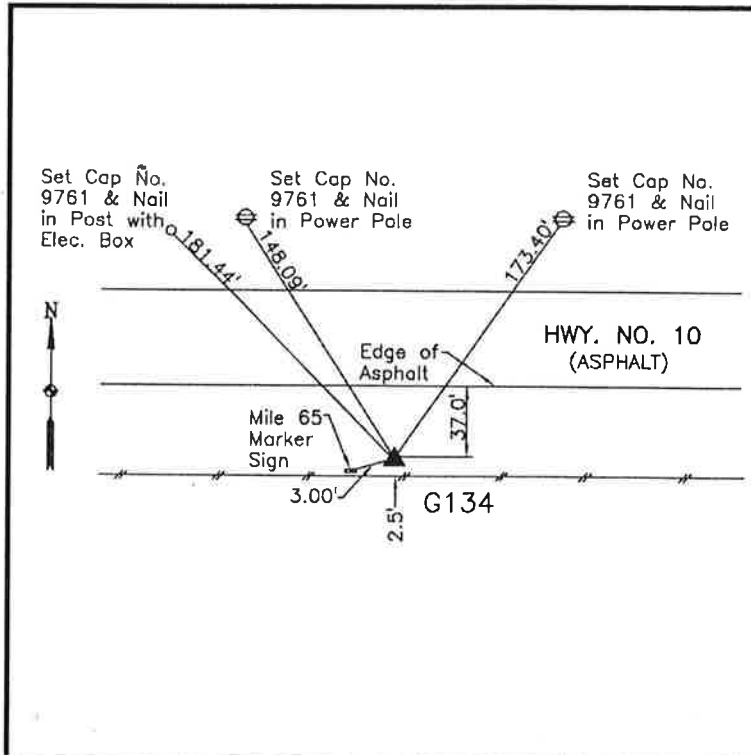
Latitude:	42° 59' 47.84131" N
Longitude:	96° 27' 04.16830" W
Scale Factor:	0.9999618206
Convergence:	-2° 00' 00.5"
Combined Factor:	0.99990428

Description:

Placed 3/4" X 6' - 0" Long Aluminum Rod with Cap Stamped G134 and NGS Style Access Cover 1" Deep

Location:

South side Iowa Highway 10
1.0 mile west of Chestnut Avenue Station 65+02 in Section 1, T94N, R48W (200 feet west of section line fence).



WHKS & CO.