

**SIOUX COUNTY, IOWA
GPS CONTROL MONUMENT
IOWA NORTH ZONE (1401)
HORIZONTAL DATUM - NAD 83 (1996)
VERTICAL DATUM - NAVD 1988**

GPS POINT NUMBER **G135**

	US SURVEY FEET	METRIC
Northing:	3840762.112	1170666.633
Easting:	4119678.144	1255680.410
Elevation:	1172.653	357.425
Ellipsoid Height:	1087.602	331.502
Geoid 99 Height:	-85.051	-25.924

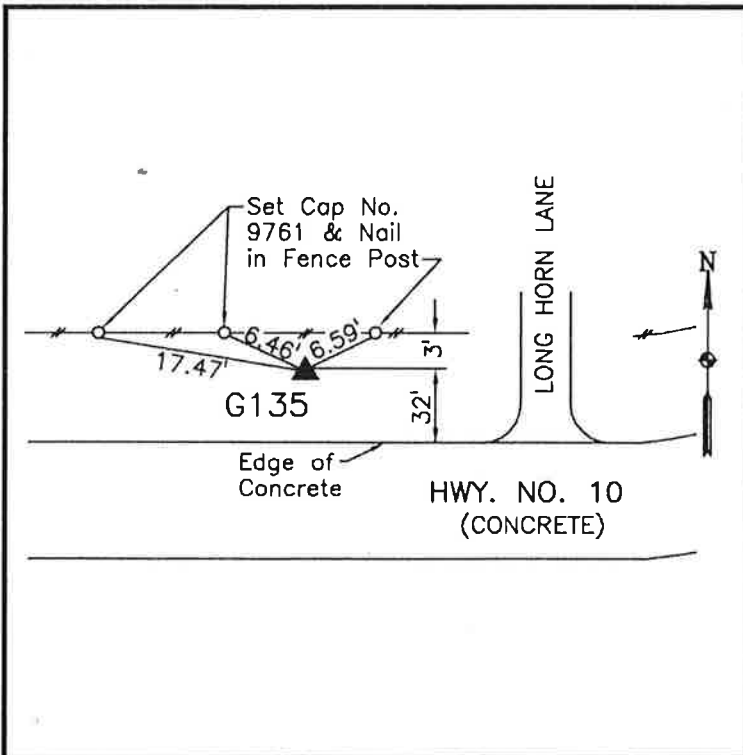
Latitude:	42° 59' 50.87413" N
Longitude:	96° 29' 48.83595" W
Scale Factor:	0.9999619050
Convergence:	-2° 01' 52.1"
Combined Factor:	0.99991002

Description:

Placed 3/4" X 6' - 0" Long Aluminum Rod with Cap Stamped G135 and NGS Style Access Cover 4" Deep

Location:

North side 450th Street 100 feet east of east end of bridge over Big Sioux River (west county line) and 200 feet west of 10th Street in Haywarden (old route) in Section 34, T95N, R48W.



WHKS & CO.