

**SIOUX COUNTY, IOWA  
GPS CONTROL MONUMENT  
IOWA NORTH ZONE (1401)  
HORIZONTAL DATUM - NAD 83 (1996)  
VERTICAL DATUM - NAVD 1988**

GPS POINT NUMBER      **G136**

	US SURVEY FEET	METRIC
Northing:	3853743.742	1174623.442
Easting:	4121369.523	1256195.943
Elevation:	1183.723	360.800
Ellipsoid Height:	1098.427	334.801
Geoid 99 Height:	-85.296	-25.998

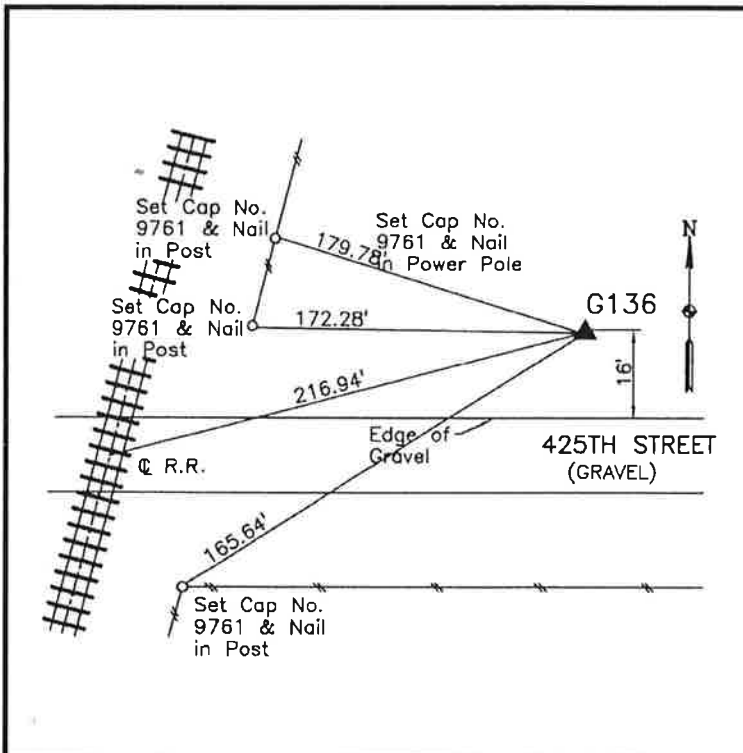
Latitude:	43° 01' 59.61147" N
Longitude:	96° 29' 32.27168" W
Scale Factor:	0.9999656895
Convergence:	-2° 01' 40.8"
Combined Factor:	0.99991328

**Description:**

Placed 3/4" X 6' - 0" Long  
Aluminum Rod with Cap  
Stamped G136 and NGS Style  
Access Cover 1" Deep

**Location:**

North side of 425th Street at  
south end of runway 34 at  
Haywarden airport in Section  
22, T95N, R48W.



**WHKS & CO.**