

**SIOUX COUNTY, IOWA  
GPS CONTROL MONUMENT  
IOWA NORTH ZONE (1401)  
HORIZONTAL DATUM - NAD 83 (1996)  
VERTICAL DATUM - NAVD 1988**

GPS POINT NUMBER      **G137**

	US SURVEY FEET	METRIC
Northing:	3856098.152	1175341.067
Easting:	4132565.942	1259608.618
Elevation:	1239.611	377.834
Ellipsoid Height:	1154.114	351.775
Geoid 99 Height:	-85.497	-26.060

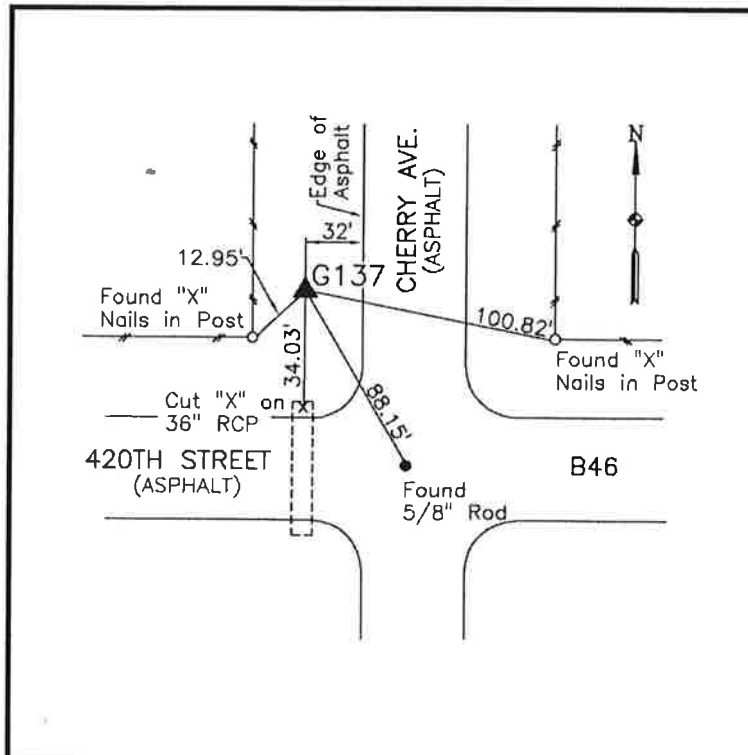
Latitude:	43° 02' 26.73915" N
Longitude:	96° 27' 02.71513" W
Scale Factor:	0.9999665368
Convergence:	-1° 59' 59.5"
Combined Factor:	0.99991147

**Description:**

Placed 3/4" X 6' - 0" Long  
Aluminum Rod with Cap  
Stamped G137 and NGS Style  
Access Cover 1" Deep

**Location:**

Northwest corner of  
intersection of 420th Street and  
Cherry Avenue in Section 13,  
T95N, R48W.



**WHKS & CO.**