

**SIOUX COUNTY, IOWA
GPS CONTROL MONUMENT
IOWA NORTH ZONE (1401)
HORIZONTAL DATUM - NAD 83 (1996)
VERTICAL DATUM - NAVD 1988**

GPS POINT NUMBER **G138**

	US SURVEY FEET	METRIC
Northing:	3855469.909	1175149.579
Easting:	4148052.176	1264328.832
Elevation:	1291.956	393.789
Ellipsoid Height:	1206.247	367.665
Geoid 99 Height:	-85.709	-26.124

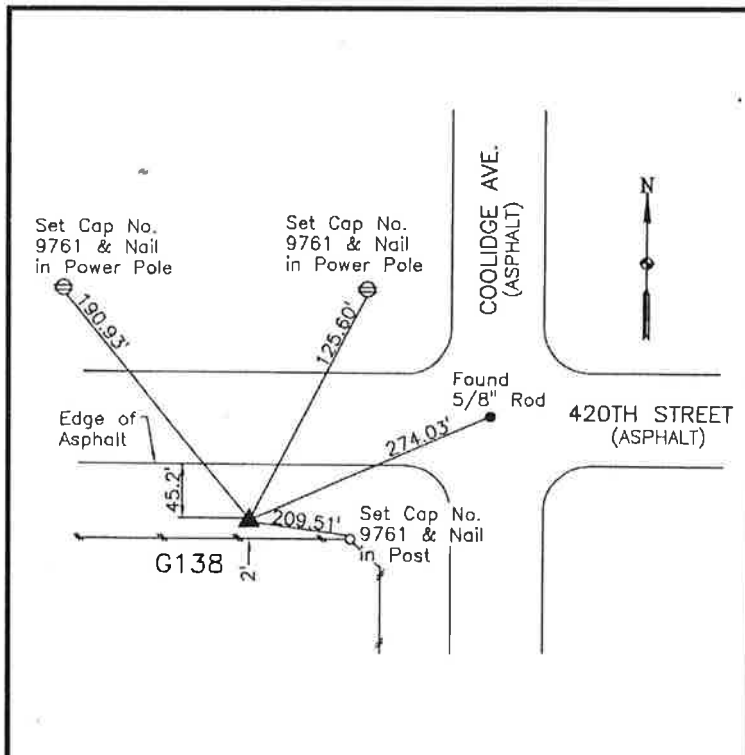
Latitude:	43° 02' 25.82301" N
Longitude:	96° 23' 34.00741" W
Scale Factor:	0.9999665079
Convergence:	-1° 57' 38.0"
Combined Factor:	0.99990896

Description:

Placed 3/4" X 6' - 0" Long
Aluminum Rod with Cap
Stamped G138 and NGS Style
Access Cover 1" Deep

Location:

South side 420th Street just
west of Coolidge Avenue in
Section 21, T95N, R47W.



WHKS & CO.