

SIOUX COUNTY, IOWA
GPS CONTROL MONUMENT
IOWA NORTH ZONE (1401)
HORIZONTAL DATUM - NAD 83 (1996)
VERTICAL DATUM - NAVD 1988

GPS POINT NUMBER **G139**

	US SURVEY FEET	METRIC
Northing:	3855033.979	1175016.707
Easting:	4164147.811	1269234.791
Elevation:	1386.986	422.754
Ellipsoid Height:	1301.065	396.566
Geoid 99 Height:	-85.920	-26.189

Latitude: 43° 02' 26.90210" N

Longitude: 96° 19' 57.18662" W

Scale Factor: 0.9999665419

Convergence: -1° 55' 11.1"

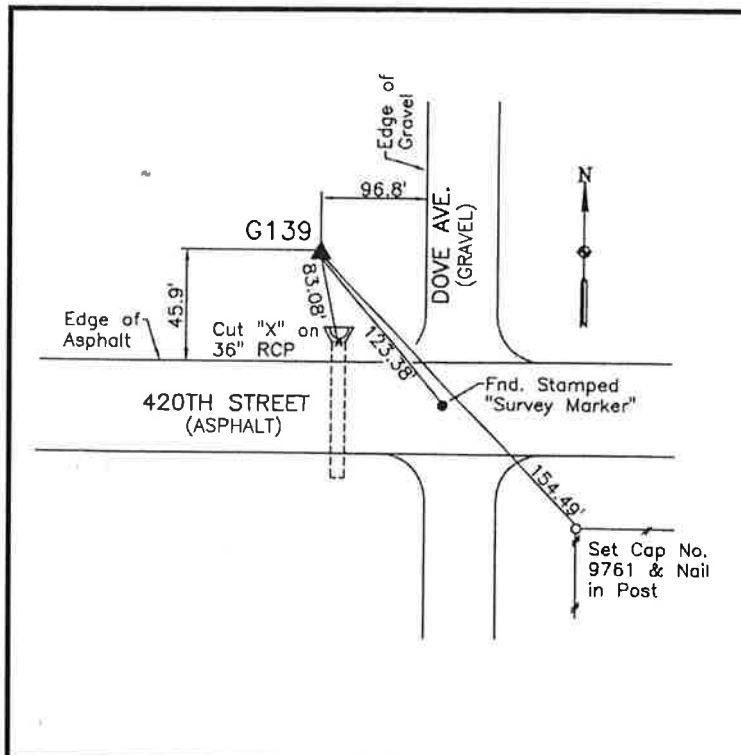
Combined Factor: 0.99990447

Description:

Placed 3/4" X 6' - 0" Long
 Aluminum Rod with Cap
 Stamped G139 and NGS Style
 Access Cover 1" Deep

Location:

North side 420th Street just
 west of Dove Avenue in
 Section 13, T95N, R47W.



WHKS & CO.

G139