

SIoux COUNTY, IOWA
GPS CONTROL MONUMENT
IOWA NORTH ZONE (1401)
HORIZONTAL DATUM - NAD 83 (1996)
VERTICAL DATUM - NAVD 1988

GPS POINT NUMBER **G140**

	US SURVEY FEET	METRIC
Northing:	3854391.723	1174820.947
Easting:	4180512.584	1274222.784
Elevation:	1390.445	423.808
Ellipsoid Height:	1304.303	397.552
Geoid 99 Height:	-86.142	-26.256

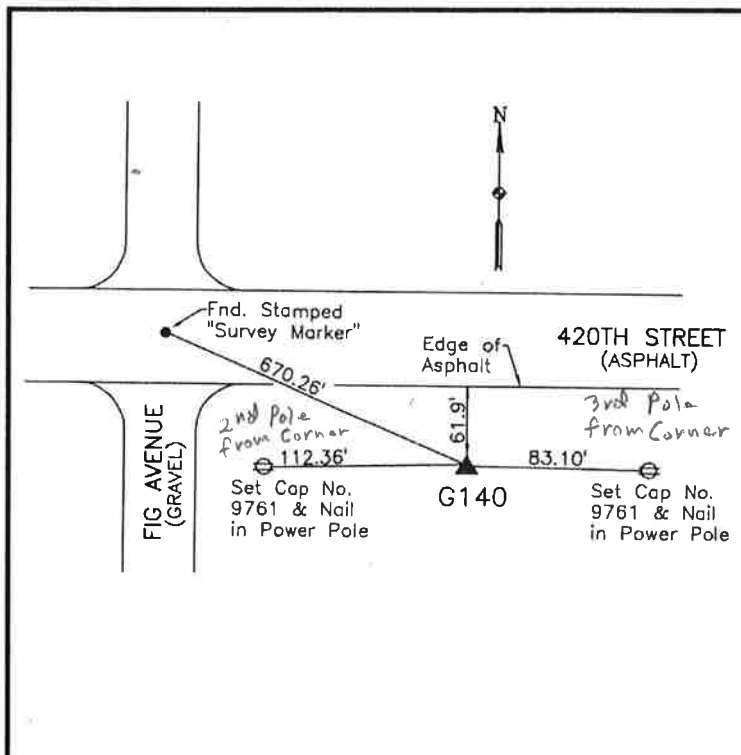
Latitude: 43° 02' 25.91815" N
Longitude: 96° 16' 16.65047" W
Scale Factor: 0.9999665109
Convergence: -1° 52' 41.6"
Combined Factor: 0.99990428

Description:

Placed 3/4" X 6' - 0" Long
Aluminum Rod with Cap
Stamped G140 and NGS Style
Access Cover 1" Deep

Location:

South side of 420th Street 0.15
mile east of Fig Avenue in
Section 22, T95N, R46W.



=====**WHKS & CO.**=====