

**SIoux COUNTY, IOWA  
GPS CONTROL MONUMENT  
IOWA NORTH ZONE (1401)  
HORIZONTAL DATUM - NAD 83 (1996)  
VERTICAL DATUM - NAVD 1988**

GPS POINT NUMBER **G141**

	US SURVEY FEET	METRIC
Northing:	3853954.472	1174687.672
Easting:	4195808.732	1278885.059
Elevation:	1440.145	438.957
Ellipsoid Height:	1353.766	412.629
Geoid 99 Height:	-86.379	-26.328

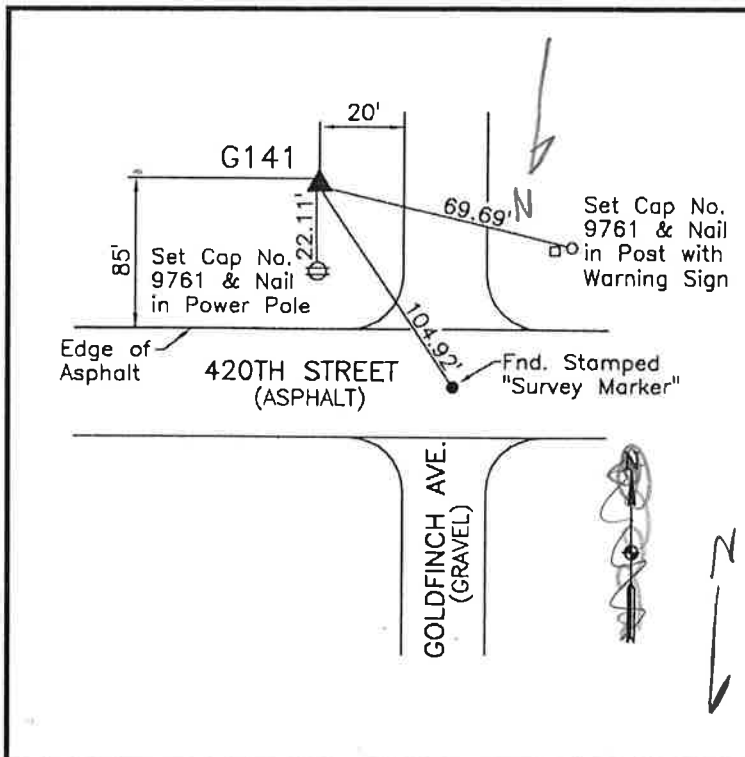
Latitude:	43° 02' 26.50231" N
Longitude:	96° 12' 50.58773" W
Scale Factor:	0.9999665293
Convergence:	-1° 50' 22.0"
Combined Factor:	0.99990194

**Description:**

Placed 3/4" X 6' - 0" Long  
Aluminum Rod with Cap  
Stamped G141 and NGS Style  
Access Cover 1" Deep

**Location:**

Southeast corner of the  
intersection 420th Street and  
Goldfinch Avenue in Section  
19, T95N, R45W.



**WHKS & CO.**