

**SIoux COUNTY, IOWA
GPS CONTROL MONUMENT
IOWA NORTH ZONE (1401)
HORIZONTAL DATUM - NAD 83 (1996)
VERTICAL DATUM - NAVD 1988**

GPS POINT NUMBER **G142**

	US SURVEY FEET	METRIC
Northing:	3853405.667	1174520.396
Easting:	4211395.129	1283635.803
Elevation:	1385.894	422.421
Ellipsoid Height:	1299.228	396.005
Geoid 99 Height:	-86.666	-26.416

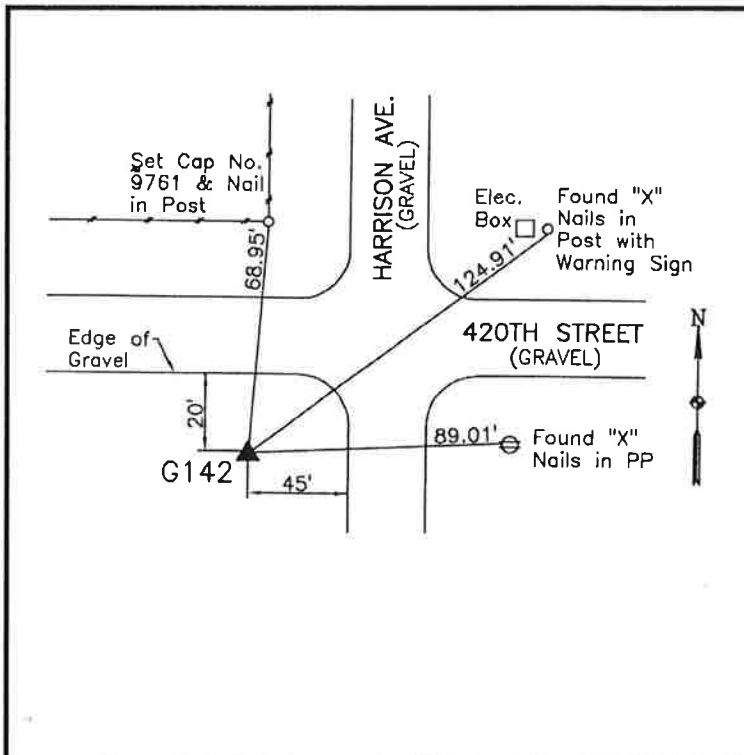
Latitude:	43° 02' 25.97287" N
Longitude:	96° 09' 20.57020" W
Scale Factor:	0.9999665126
Convergence:	-1° 47' 59.6"
Combined Factor:	0.99990453

Description:

Placed 3/4" X 6' - 0" Long Aluminum Rod with Cap Stamped G142 and NGS Style Access Cover 1" Deep

Location:

Southwest corner of intersection of 420th Street and Harrison Avenue in Section 21, T95N, R45W.



WHKS & CO.