

**SIoux COUNTY, IOWA  
GPS CONTROL MONUMENT  
IOWA NORTH ZONE (1401)  
HORIZONTAL DATUM - NAD 83 (1996)  
VERTICAL DATUM - NAVD 1988**

GPS POINT NUMBER **G143**

	US SURVEY FEET	METRIC
Northing:	3853264.578	1174477.392
Easting:	4227284.375	1288478.854
Elevation:	1399.408	426.540
Ellipsoid Height:	1312.455	400.037
Geoid 99 Height:	-86.953	-26.503

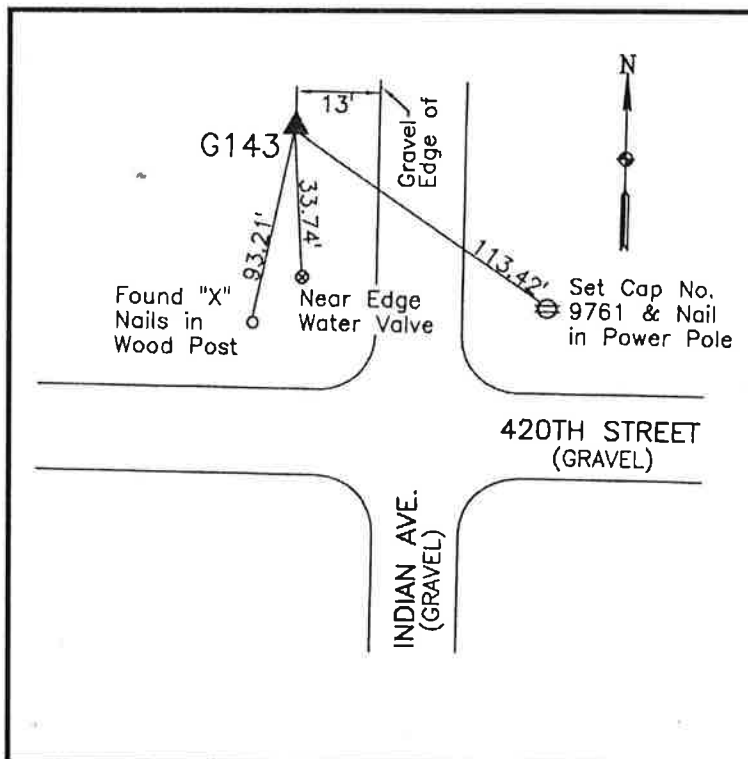
Latitude:	43° 02' 29.45429" N
Longitude:	96° 05' 46.64610" W
Scale Factor:	0.9999666226
Convergence:	-1° 45' 34.6"
Combined Factor:	0.99990401

**Description:**

Placed 3/4" X 6' - 0" Long Aluminum Rod with Cap Stamped G143 and NGS Style Access Cover 1" Deep

**Location:**

West side of Indian Avenue just north of 420th Street in Section 13, T95N, R45W.



**WHKS & CO.**