

SIoux COUNTY, IOWA
GPS CONTROL MONUMENT
IOWA NORTH ZONE (1401)
HORIZONTAL DATUM - NAD 83 (1996)
VERTICAL DATUM - NAVD 1988

GPS POINT NUMBER **G144**

| | US SURVEY FEET | METRIC |
|-------------------|----------------|-------------|
| Northing: | 3852826.615 | 1174343.901 |
| Easting: | 4243168.794 | 1293320.435 |
| Elevation: | 1423.443 | 433.866 |
| Ellipsoid Height: | 1336.202 | 407.275 |
| Geoid 99 Height: | -87.240 | -26.591 |

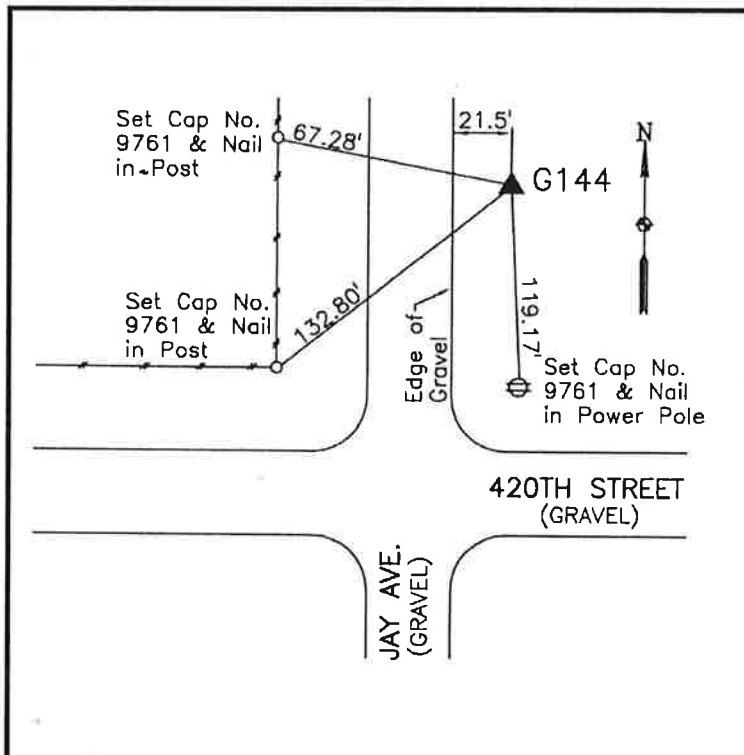
Latitude: 43° 02' 29.89295" N
Longitude: 96° 02' 12.66044" W
Scale Factor: 0.9999666364
Convergence: -1° 43' 09.6"
Combined Factor: 0.99990289

Description:

Placed 3/4" X 6' - 0" Long
Aluminum Rod with Cap
Stamped G144 and NGS Style
Access Cover 1" Deep

Location:

Northeast side of intersection
of Jay Avenue and 420th
Street in Section 15, T95N,
R44W.



=====
WHKS & CO. =====