

**SIOUX COUNTY, IOWA
GPS CONTROL MONUMENT
IOWA NORTH ZONE (1401)
HORIZONTAL DATUM - NAD 83 (1996)
VERTICAL DATUM - NAVD 1988**

GPS POINT NUMBER **G145**

	US SURVEY FEET	METRIC
Northing:	3851923.460	1174068.619
Easting:	4258874.436	1298107.524
Elevation:	1386.127	422.492
Ellipsoid Height:	1298.557	395.801
Geoid 99 Height:	-87.570	-26.691

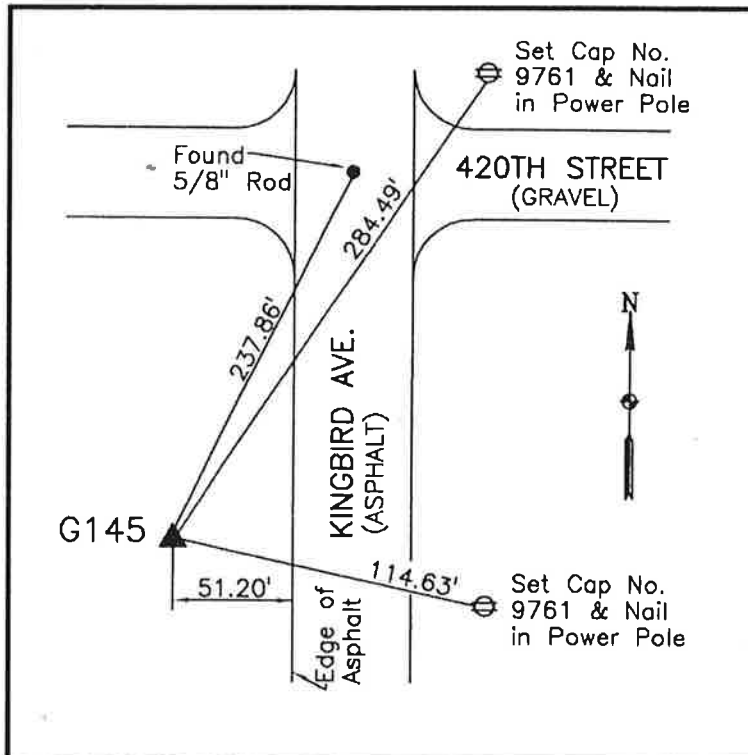
Latitude:	43° 02' 25.57656" N
Longitude:	95° 58' 40.89690" W
Scale Factor:	0.9999665001
Convergence:	-1° 40' 46.1"
Combined Factor:	0.99990455

Description:

Placed 3/4" X 6' - 0" Long
Aluminum Rod with Cap
Stamped G145 and NGS Style
Access Cover 2" Deep

Location:

Southwest side of intersection
of Kingbird Avenue and 420th
Street in Section 24, T95N,
R44W.



WHKS & CO.