

SIOUX COUNTY, IOWA
GPS CONTROL MONUMENT
IOWA NORTH ZONE (1401)
HORIZONTAL DATUM - NAD 83 (1996)
VERTICAL DATUM - NAVD 1988

GPS POINT NUMBER **G146**

	US SURVEY FEET	METRIC
Northing:	3851290.801	1173875.784
Easting:	4276799.134	1303570.983
Elevation:	1376.401	419.528
Ellipsoid Height:	1288.434	392.715
Geoid 99 Height:	-87.967	-26.812

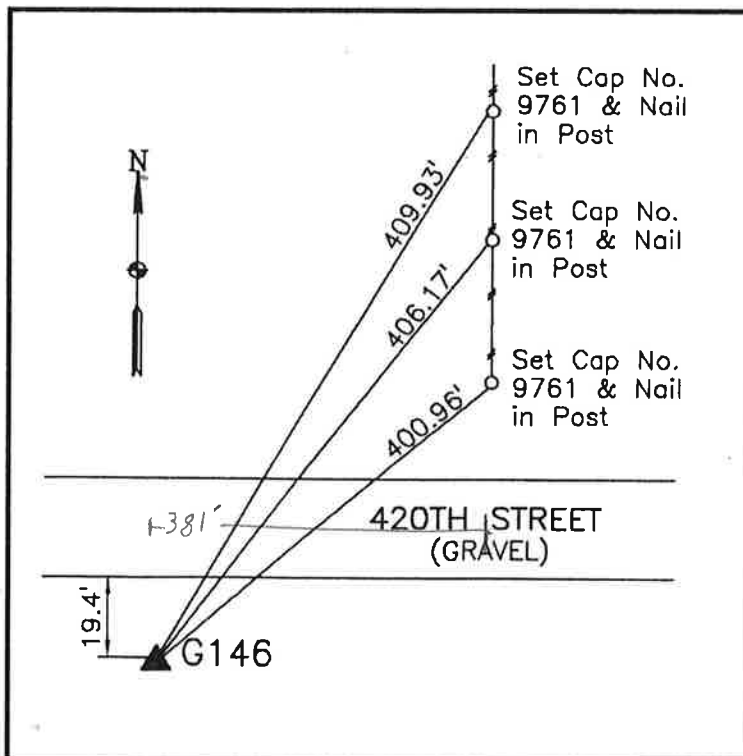
Latitude: 43° 02' 24.44890" N
Longitude: 95° 54' 39.37621" W
Scale Factor: 0.9999664646
Convergence: -1° 38' 02.4"
Combined Factor: 0.99990499

Description:

Placed 3/4" X 6' - 0" Long
Aluminum Rod with Cap
Stamped G146 and NGS Style
Access Cover 4" Deep

Location:

South side 420th Street 0.4
mile east of U.S. 60 in Section
22, T95N, R43W.



WHKS & CO.