

**SIOUX COUNTY, IOWA  
GPS CONTROL MONUMENT  
IOWA NORTH ZONE (1401)  
HORIZONTAL DATUM - NAD 83 (1996)  
VERTICAL DATUM - NAVD 1988**

GPS POINT NUMBER **G147**

	US SURVEY FEET	METRIC
Northing:	3850688.498	1173692.202
Easting:	4290317.446	1307691.373
Elevation:	1416.751	431.827
Ellipsoid Height:	1328.471	404.919
Geoid 99 Height:	-88.280	-26.908

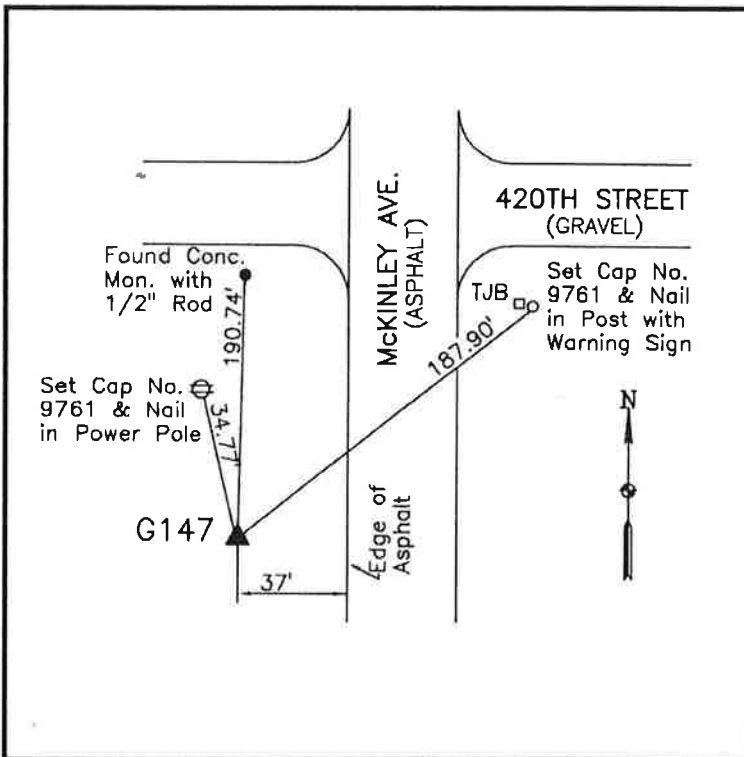
Latitude:	43° 02' 22.26959" N
Longitude:	95° 51' 37.18262" W
Scale Factor:	0.9999663960
Convergence:	-1° 35' 58.9"
Combined Factor:	0.99990302

**Description:**

Placed 3/4" X 6' - 0" Long Aluminum Rod with Cap Stamped G147 and NGS Style Access Cover 2" Deep

**Location:**

West side McKinley Avenue  
0.05 mile south of 420th Street  
east county line in Section 24,  
T95N, R43W.



**WHKS & CO.**