

SIOUX COUNTY, IOWA
GPS CONTROL MONUMENT
IOWA NORTH ZONE (1401)
HORIZONTAL DATUM - NAD 83 (1996)
VERTICAL DATUM - NAVD 1988

GPS POINT NUMBER **G148**

	US SURVEY FEET	METRIC
Northing:	3866758.928	1178590.479
Easting:	4290655.474	1307794.404
Elevation:	1350.909	411.758
Ellipsoid Height:	1262.559	384.829
Geoid 99 Height:	-88.350	-26.929

Latitude: 43° 05' 01.03456" N

Longitude: 95° 51' 38.67480" W

Scale Factor: 0.9999716858

Convergence: -1° 35' 59.9"

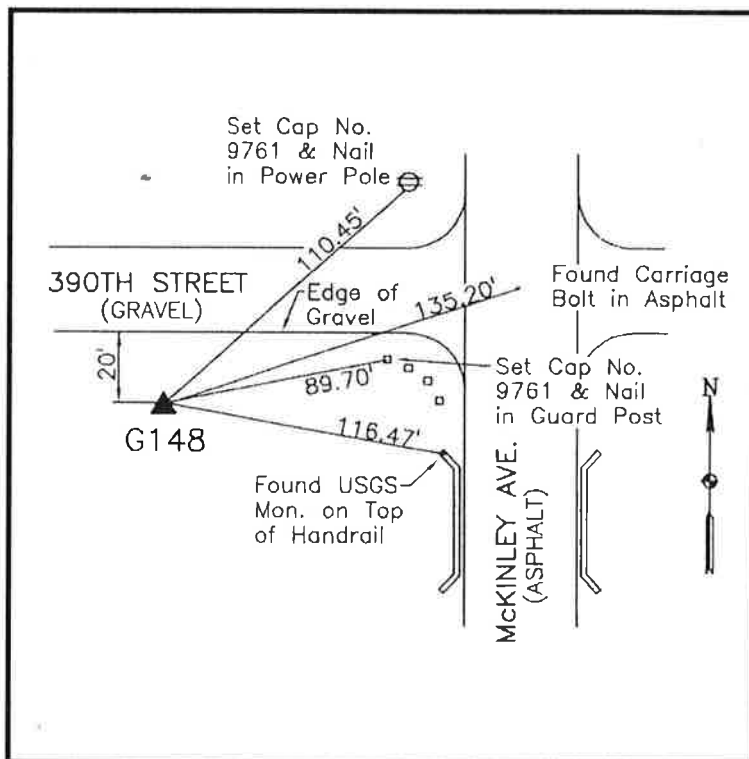
Combined Factor: 0.99991145

Description:

Placed 3/4" X 6' - 0" Long
 Aluminum Rod with Cap
 Stamped G148 and NGS Style
 Access Cover 2" Deep

Location:

Southwest side of intersection
 of McKinley Avenue and 390th
 Street east county line in
 Section 1, T95N, R43W.



WHKS & CO.