

**SIoux COUNTY, IOWA
GPS CONTROL MONUMENT
IOWA NORTH ZONE (1401)
HORIZONTAL DATUM - NAD 83 (1996)
VERTICAL DATUM - NAVD 1988**

GPS POINT NUMBER **G149**

	US SURVEY FEET	METRIC
Northing:	3867303.456	1178756.451
Easting:	4274715.184	1302935.794
Elevation:	1349.114	411.211
Ellipsoid Height:	1261.121	384.390
Geoid 99 Height:	-87.992	-26.820

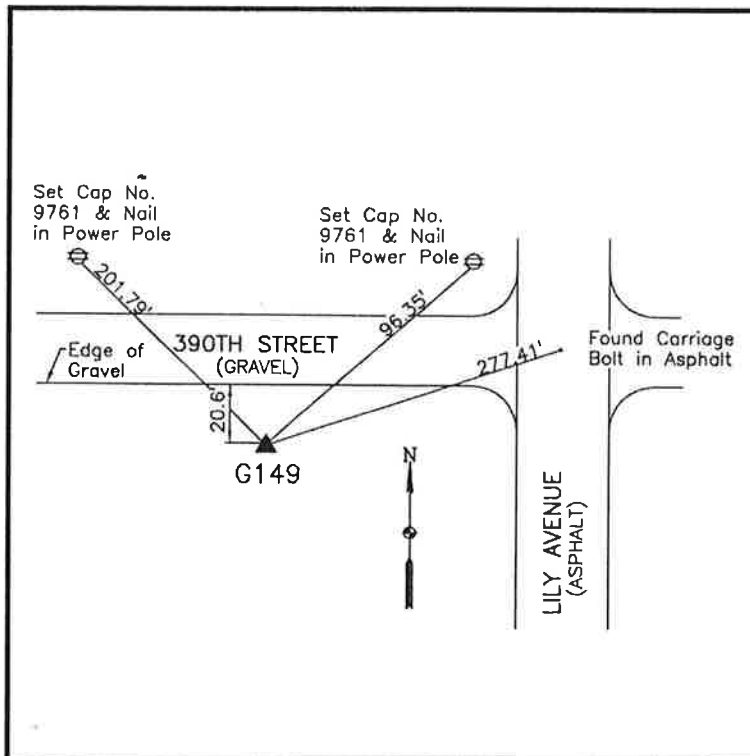
Latitude:	43° 05' 01.95917" N
Longitude:	95° 55' 13.60006" W
Scale Factor:	0.9999717183
Convergence:	-1° 38' 25.6"
Combined Factor:	0.99991155

Description:

Placed 3/4" X 6' - 0" Long
Aluminum Rod with Cap
Stamped G149 and NGS Style
Access Cover 1" Deep

Location:

South side 390th Street 0.05
mile west of Lily Avenue in
Section 4, T95N, R43W.



WHKS & CO.