

**SIOUX COUNTY, IOWA
GPS CONTROL MONUMENT
IOWA NORTH ZONE (1401)
HORIZONTAL DATUM - NAD 83 (1996)
VERTICAL DATUM - NAVD 1988**

GPS POINT NUMBER **G150**

| | US SURVEY FEET | METRIC |
|-------------------|----------------|-------------|
| Northing: | 3867865.565 | 1178927.782 |
| Easting: | 4259474.544 | 1298290.438 |
| Elevation: | 1438.081 | 438.328 |
| Ellipsoid Height: | 1350.434 | 411.613 |
| Geoid 99 Height: | -87.647 | -26.715 |

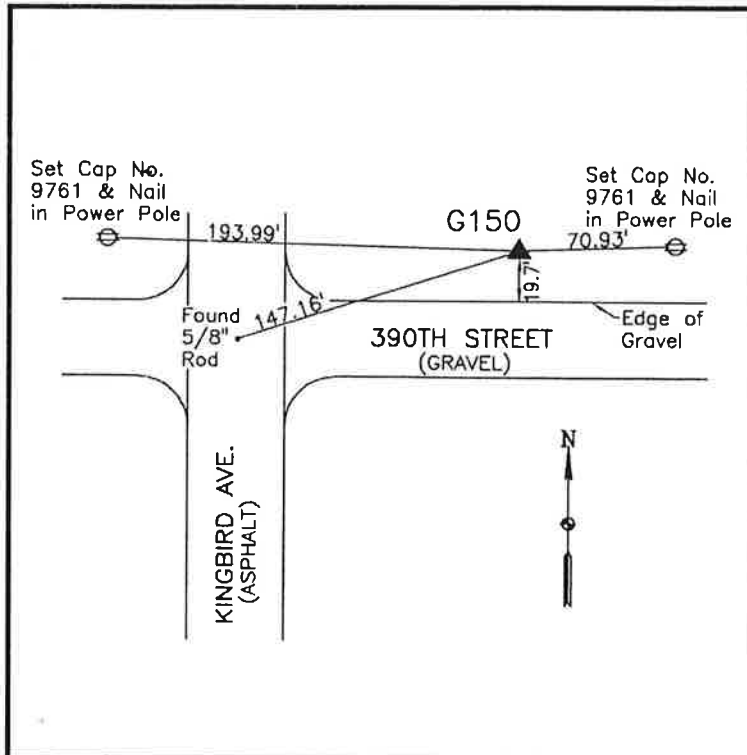
| | |
|------------------|---------------------|
| Latitude: | 43° 05' 03.14872" N |
| Longitude: | 95° 58' 39.10979" W |
| Scale Factor: | 0.9999717602 |
| Convergence: | -1° 40' 44.9" |
| Combined Factor: | 0.99990733 |

Description:

Placed 3/4" X 6' - 0" Long
Aluminum Rod with Cap
Stamped G150 and NGS Style
Access Cover 2" Deep

Location:

Northeast side of intersection
of Kingbird Avenue and 390th
Street in Section 31, T96N,
R43W.



WHKS & CO.