

**SIOUX COUNTY, IOWA
GPS CONTROL MONUMENT
IOWA NORTH ZONE (1401)
HORIZONTAL DATUM - NAD 83 (1996)
VERTICAL DATUM - NAVD 1988**

GPS POINT NUMBER **G152**

	US SURVEY FEET	METRIC
Northing:	3869047.222	1179287.952
Easting:	4226958.233	1288379.446
Elevation:	1365.070	416.074
Ellipsoid Height:	1278.024	389.543
Geoid 99 Height:	-87.046	-26.532

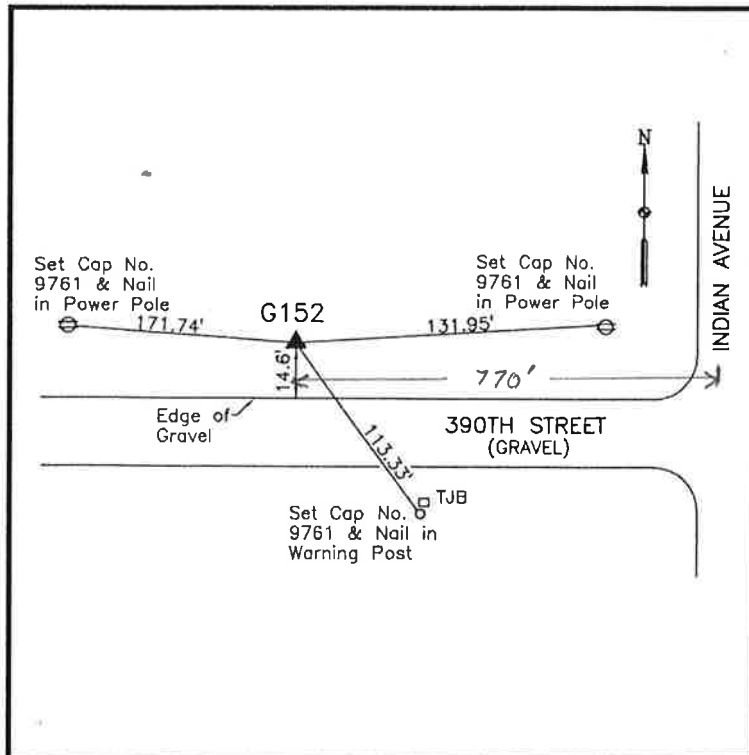
Latitude:	43° 05' 05.17270" N
Longitude:	96° 05' 57.56974" W
Scale Factor:	0.9999718316
Convergence:	-1° 45' 42.0"
Combined Factor:	0.99991086

Description:

Placed 3/4" X 6' - 0" Long Aluminum Rod with Cap Stamped G152 and NGS Style Access Cover 1" Deep

Location:

North side 390th Street 0.15 mile west of Indian Avenue in Section 36, T96N, R45W.



WHKS & CO.