

**SIOUX COUNTY, IOWA
GPS CONTROL MONUMENT
IOWA NORTH ZONE (1401)
HORIZONTAL DATUM - NAD 83 (1996)
VERTICAL DATUM - NAVD 1988**

GPS POINT NUMBER **G153**

	US SURVEY FEET	METRIC
Northing:	3870842.547	1179835.168
Easting:	4211861.625	1283777.991
Elevation:	1429.134	435.601
Ellipsoid Height:	1342.333	409.144
Geoid 99 Height:	-86.801	-26.457

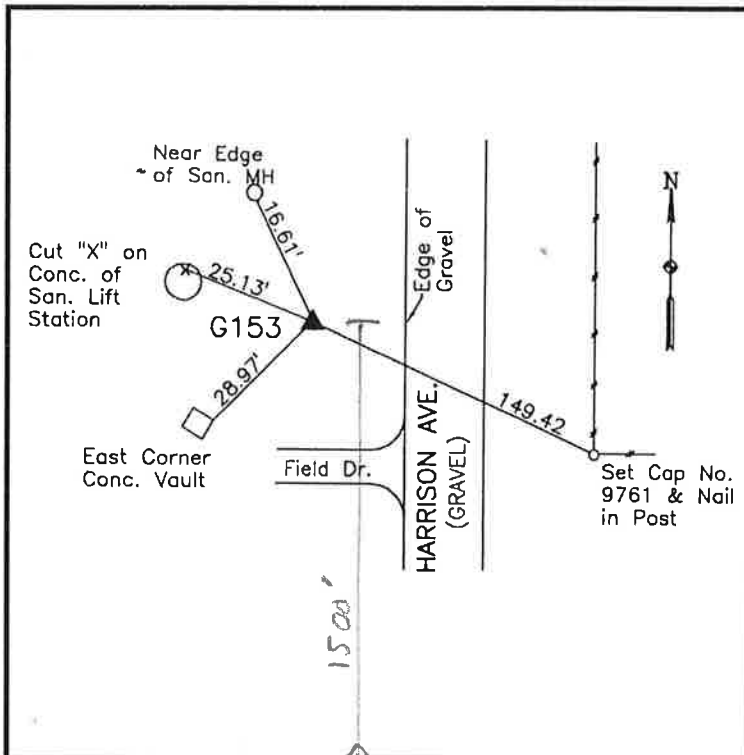
Latitude:	43° 05' 18.26304" N
Longitude:	96° 09' 21.66729" W
Scale Factor:	0.9999722956
Convergence:	-1° 48' 00.4"
Combined Factor:	0.99990825

Description:

Placed 3/4" X 6' - 0" Long
Aluminum Rod with Cap
Stamped G153 and NGS Style
Access Cover 6" Deep

Location:

West side Harrison Avenue 0.3
mile north of 390th Street in
Section 33, T96N, R45W.



WHKS & CO.