

**SIOUX COUNTY, IOWA
GPS CONTROL MONUMENT
IOWA NORTH ZONE (1401)
HORIZONTAL DATUM - NAD 83 (1996)
VERTICAL DATUM - NAVD 1988**

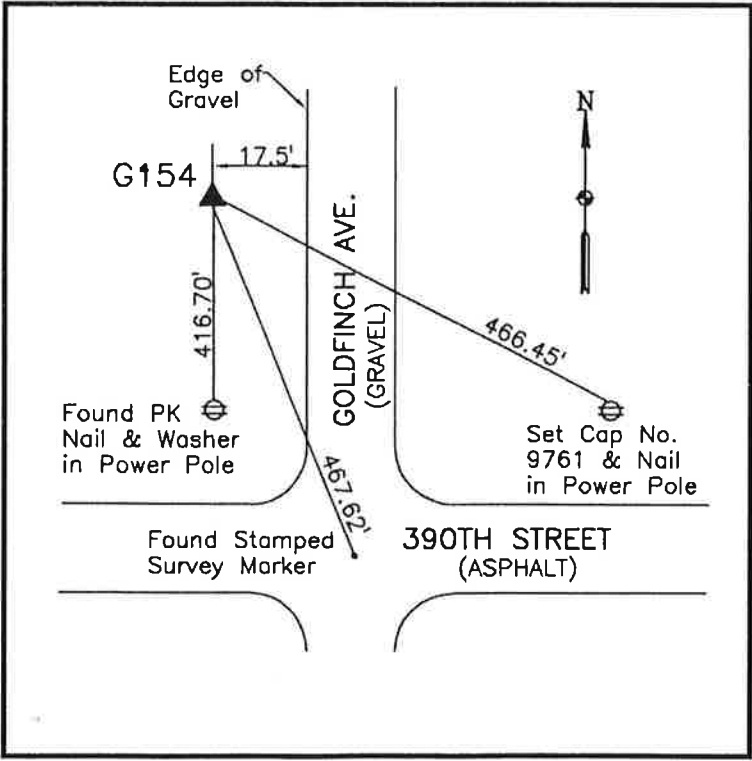
GPS POINT NUMBER **G154**

	US SURVEY FEET	METRIC
Northing:	3870245.490	1179653.185
Easting:	4196185.934	1279000.031
Elevation:	1442.822	439.773
Ellipsoid Height:	1356.287	413.397
Geoid 99 Height:	-86.535	-26.376

Latitude:	43° 05' 07. ³⁷²²⁸ 45136" N
Longitude:	96° 12' 52. ⁶⁶³⁷¹ 55403" W
Scale Factor:	0.9999719121
Convergence:	-1° 50' 23.3"
Combined Factor:	0.99990720

Description:
Placed 3/4" X 6' - 0" Long
Aluminum Rod with Cap
Stamped G154 and NGS Style
Access Cover 1" Deep

Location:
West side Goldfinch Avenue
0.1 mile north of 390th Street in
Section 36, T96N, R46W.



WHKS & CO.