

**SIOUX COUNTY, IOWA
GPS CONTROL MONUMENT
IOWA NORTH ZONE (1401)
HORIZONTAL DATUM - NAD 83 (1996)
VERTICAL DATUM - NAVD 1988**

GPS POINT NUMBER **G155**

	US SURVEY FEET	METRIC
Northing:	3870260.312	1179657.702
Easting:	4179852.423	1274021.567
Elevation:	1379.933	420.604
Ellipsoid Height:	1293.632	394.300
Geoid 99 Height:	-86.301	-26.305

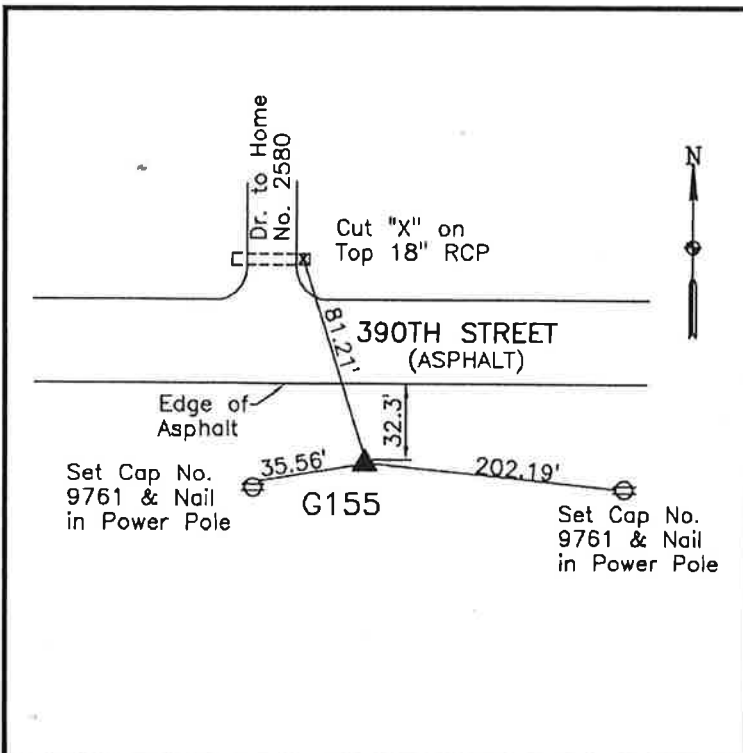
Latitude:	43° 05' 02.35985" N
Longitude:	96° 16' 32.55037" W
Scale Factor:	0.9999717324
Convergence:	-1° 52' 52.4"
Combined Factor:	0.99991001

Description:

Placed 3/4" X 6' - 0" Long
Aluminum Rod with Cap
Stamped G155 and NGS Style
Access Cover 1" Deep

Location:

South side 390th Street 0.1
mile west of Fig Avenue in
Section 4, T95N, R46W.



WHKS & CO.