

**SIOUX COUNTY, IOWA**  
**GPS CONTROL MONUMENT**  
**IOWA NORTH ZONE (1401)**  
**HORIZONTAL DATUM - NAD 83 (1996)**  
**VERTICAL DATUM - NAVD 1988**

GPS POINT NUMBER      **G156**

	US SURVEY FEET	METRIC
Northing:	3870797.992	1179821.588
Easting:	4164574.092	1269364.722
Elevation:	1399.444	426.551
Ellipsoid Height:	1313.335	400.305
Geoid 99 Height:	-86.109	-26.246

Latitude:                      43° 05' 02.66275" N

Longitude:                    96° 19' 58.56177" W

Scale Factor:                0.9999717431

Convergence:               -1° 55' 12.0"

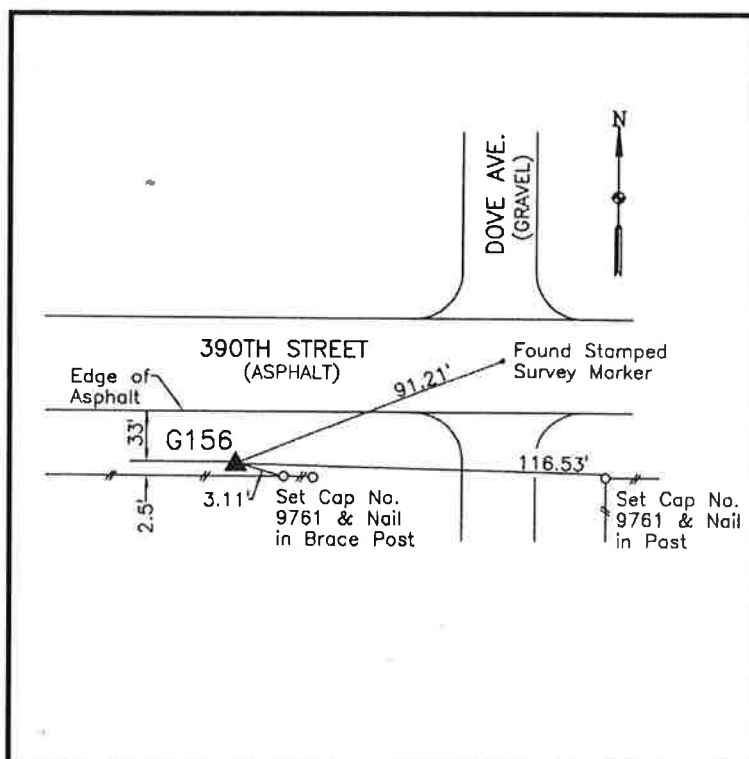
Combined Factor:           0.99990908

Description:

Placed 3/4" X 6' - 0" Long  
 Aluminum Rod with Cap  
 Stamped G156 and NGS Style  
 Access Cover 3" Deep

Location:

Southwest side of intersection  
 of Dove Avenue and 390th  
 Street in Section 1, T95N,  
 R47W.



**WHKS & CO.**

G156