

**SIOUX COUNTY, IOWA
GPS CONTROL MONUMENT
IOWA NORTH ZONE (1401)
HORIZONTAL DATUM - NAD 83 (1996)
VERTICAL DATUM - NAVD 1988**

GPS POINT NUMBER **G157**

	US SURVEY FEET	METRIC
Northing:	3871257.286	1179961.581
Easting:	4148701.244	1264526.668
Elevation:	1314.385	400.625
Ellipsoid Height:	1228.453	374.433
Geoid 99 Height:	-85.931	-26.192

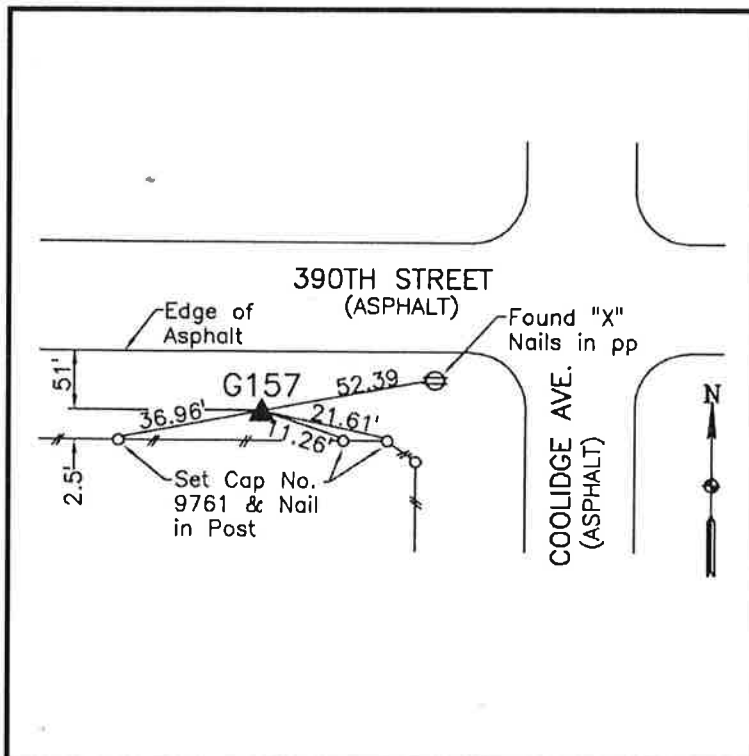
Latitude:	43° 05' 01.88884" N
Longitude:	96° 23' 32.54429" W
Scale Factor:	0.9999717159
Convergence:	-1° 57' 37.0"
Combined Factor:	0.99991311

Description:

Placed 3/4" X 6' - 0" Long Aluminum Rod with Cap Stamped G157 and NGS Style Access Cover 1" Deep

Location:

Southwest side of intersection of Coolidge Avenue and 390th Street in Section 4, T95N, R47W.



WHKS & CO.