

SIoux COUNTY, IOWA
GPS CONTROL MONUMENT
IOWA NORTH ZONE (1401)
HORIZONTAL DATUM - NAD 83 (1996)
VERTICAL DATUM - NAVD 1988

GPS POINT NUMBER **G158**

	US SURVEY FEET	METRIC
Northing:	3872256.727	1180266.211
Easting:	4133393.693	1259860.917
Elevation:	1196.948	364.830
Ellipsoid Height:	1111.175	338.687
Geoid 99 Height:	-85.772	-26.143

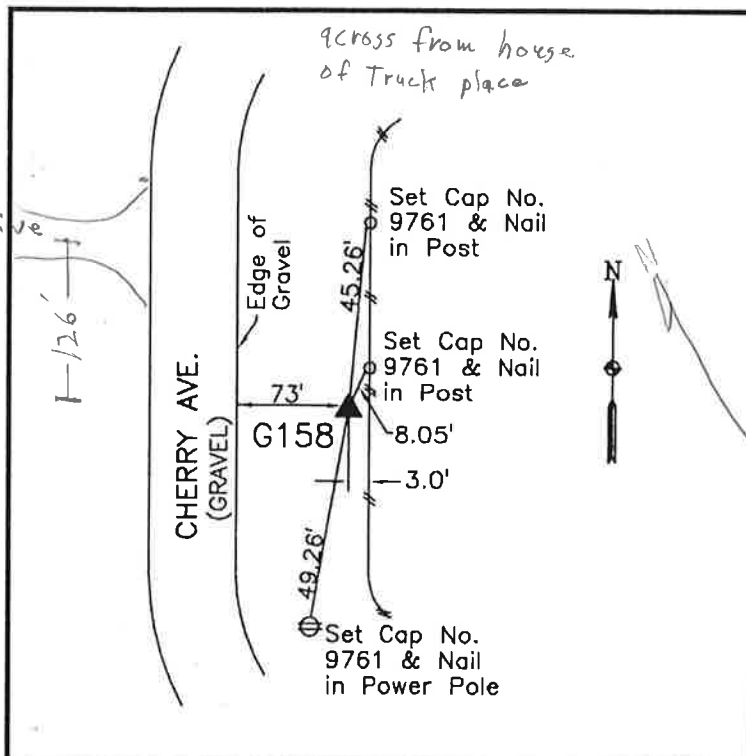
Latitude:	43° 05' 06.53144" N
Longitude:	96° 26' 59.16613" W
Scale Factor:	0.9999718796
Convergence:	-1° 59' 57.1"
Combined Factor:	0.99991887

Description:

Placed 3/4" X 6' - 0" Long Aluminum Rod with Cap Stamped G158 and NGS Style Access Cover 3" Deep

Location:

East side of Cherry Avenue 0.35 mile northwesterly of "T" intersection of Cherry Avenue and 390th Street in Section 31, T96N, R47W.



WHKS & CO.