

SIOUX COUNTY, IOWA
GPS CONTROL MONUMENT
IOWA NORTH ZONE (1401)
HORIZONTAL DATUM - NAD 83 (1996)
VERTICAL DATUM - NAVD 1988

GPS POINT NUMBER **G159**

	US SURVEY FEET	METRIC
NORTHING:	3890161.054	
EASTING:	4136027.861	RELOCATION COORDINATES
ELEVATION:	1208.926	
Ellipsoid Height:	1122.338	342.089
Geoid 99 Height:	-86.078	-26.237

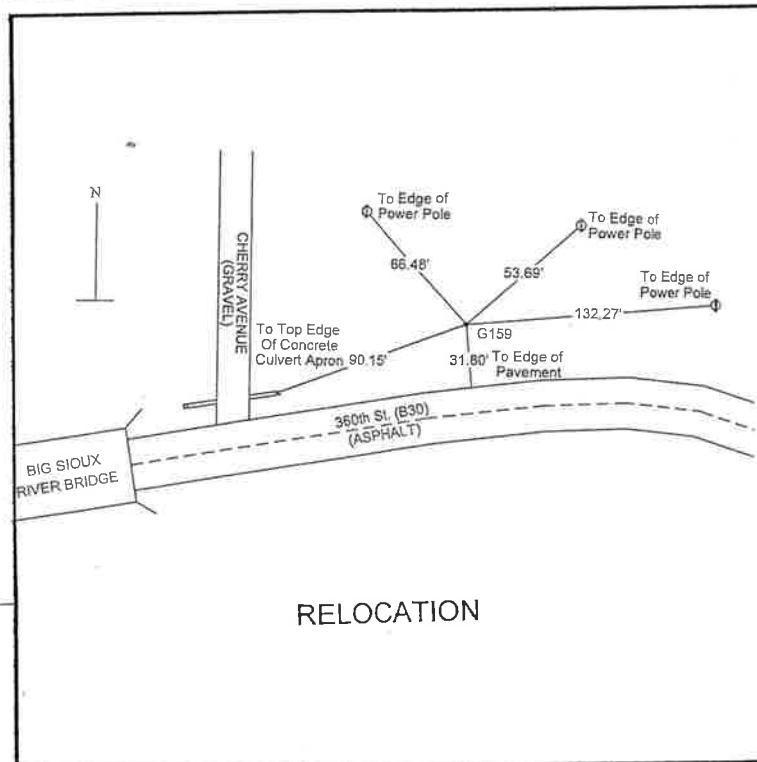
LATITUDE:	43° 08' 04.17571" N
LONGITUDE:	96° 26' 32.08558" W
Scale Factor:	0.9999785200
Convergence:	-1° 59' 38.8"
Combined Factor:	0.99992497

Description:

Placed 3/4" X 6' - 0" Long Aluminum Rod with Cap Stamped G159 and NGS Style Access Cover 1" Deep

Location:

Northeast corner of intersection of 360th Street and Cherry Avenue in Section 18, T96N, R47W.



RELOCATION

WHKS & CO.