

SIOUX COUNTY, IOWA
GPS CONTROL MONUMENT
IOWA NORTH ZONE (1401)
HORIZONTAL DATUM - NAD 83 (1996)
VERTICAL DATUM - NAVD 1988

GPS POINT NUMBER **G160**

| | US SURVEY FEET | METRIC |
|-------------------|----------------|-------------|
| Northing: | 3887306.584 | 1184853.416 |
| Easting: | 4150464.172 | 1265064.010 |
| Elevation: | 1285.633 | 391.862 |
| Ellipsoid Height: | 1199.455 | 365.595 |
| Geoid 99 Height: | -86.178 | -26.267 |

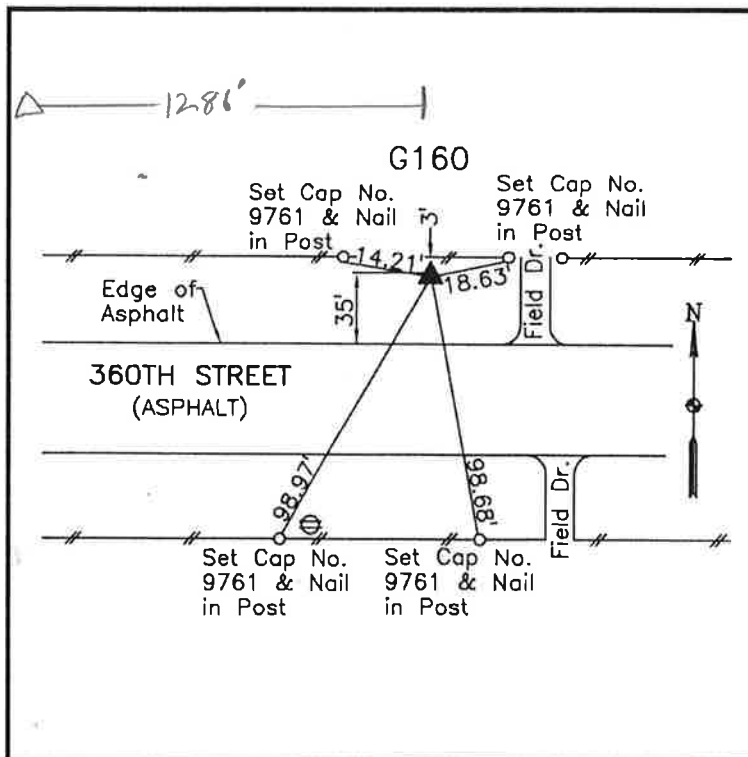
| | |
|------------------|---------------------|
| Latitude: | 43° 07' 40.91415" N |
| Longitude: | 96° 23' 16.18814" W |
| Scale Factor: | 0.9999776134 |
| Convergence: | -1° 57' 26.0" |
| Combined Factor: | 0.99992039 |

Description:

Placed 3/4" X 6' - 0" Long
 Aluminum Rod with Cap
 Stamped G160 and NGS Style
 Access Cover 2" Deep

Location:

North side of 360th Street 0.2
 mile east of Coolidge Avenue
 near driveway and gate in
 Section 15, T96N, R47W.



WHKS & CO.