

**SIoux COUNTY, IOWA**  
**GPS CONTROL MONUMENT**  
**IOWA NORTH ZONE (1401)**  
**HORIZONTAL DATUM - NAD 83 (1996)**  
**VERTICAL DATUM - NAVD 1988**

GPS POINT NUMBER      **G161**

	US SURVEY FEET	METRIC
Northing:	3886829.711	1184708.065
Easting:	4165224.169	1269562.866
Elevation:	1417.729	432.125
Ellipsoid Height:	1331.415	405.816
Geoid 99 Height:	-86.313	-26.308

Latitude:                      43° 07' 41.13811" N

Longitude:                    96° 19' 57.04357" W

Scale Factor:                0.9999776221

Convergence:                -1° 55' 11.0"

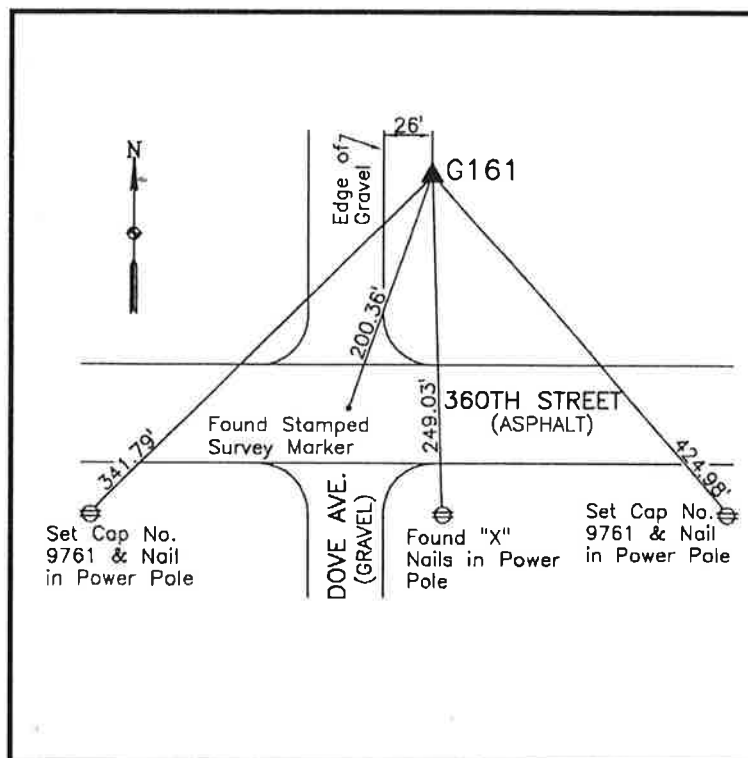
Combined Factor:            0.99991410

Description:

Placed 3/4" X 6' - 0" Long  
 Aluminum Rod with Cap  
 Stamped G161 and NGS Style  
 Access Cover 2" Deep

Location:

East side of Dove Avenue just  
 north of 360th Street in Section  
 18, T96N, R46W.



**WHKS & CO.**

G161