

**SIOUX COUNTY, IOWA  
GPS CONTROL MONUMENT  
IOWA NORTH ZONE (1401)  
HORIZONTAL DATUM - NAD 83 (1996)  
VERTICAL DATUM - NAVD 1988**

GPS POINT NUMBER      **G162**

	US SURVEY FEET	METRIC
Northing:	3886128.100	1184494.214
Easting:	4180455.988	1274205.534
Elevation:	1414.698	431.201
Ellipsoid Height:	1328.227	404.844
Geoid 99 Height:	-86.471	-26.356

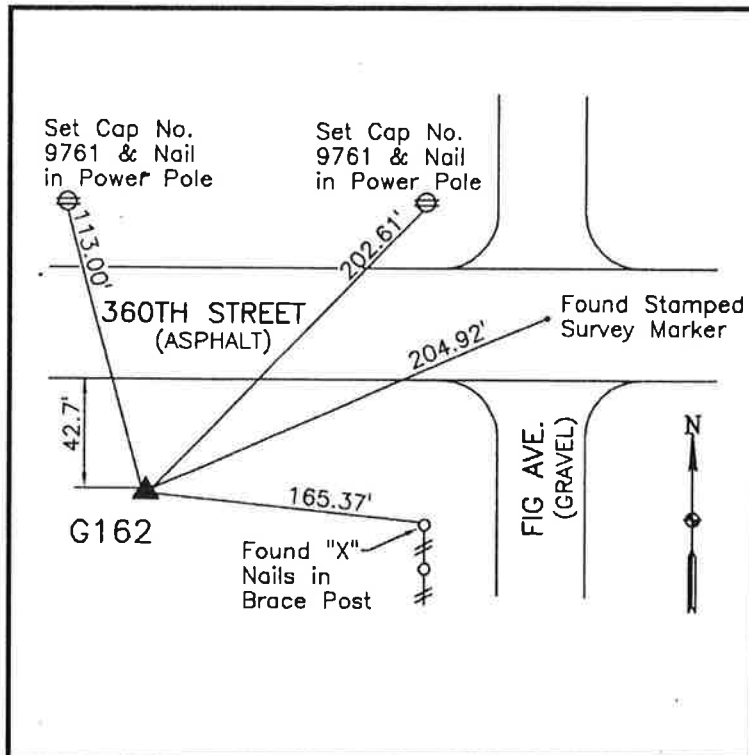
Latitude:	43° 07' 39.20105" N
Longitude:	96° 16' 31.44003" W
Scale Factor:	0.9999775467
Convergence:	-1° 52' 51.6"
Combined Factor:	0.99991418

**Description:**

Placed 3/4" X 6' - 0" Long Aluminum Rod with Cap Stamped G162 and NGS Style Access Cover 3" Deep

**Location:**

South side of 360th Street just west of Fig Avenue in Section 21, T96N, R46W.



**WHKS & CO.**