

**SIOUX COUNTY, IOWA
GPS CONTROL MONUMENT
IOWA NORTH ZONE (1401)
HORIZONTAL DATUM - NAD 83 (1996)
VERTICAL DATUM - NAVD 1988**

GPS POINT NUMBER **G163**

	US SURVEY FEET	METRIC
Northing:	3885161.961	1184199.734
Easting:	4196511.353	1279099.218
Elevation:	1454.778	443.417
Ellipsoid Height:	1368.114	417.002
Geoid 99 Height:	-86.664	-26.415

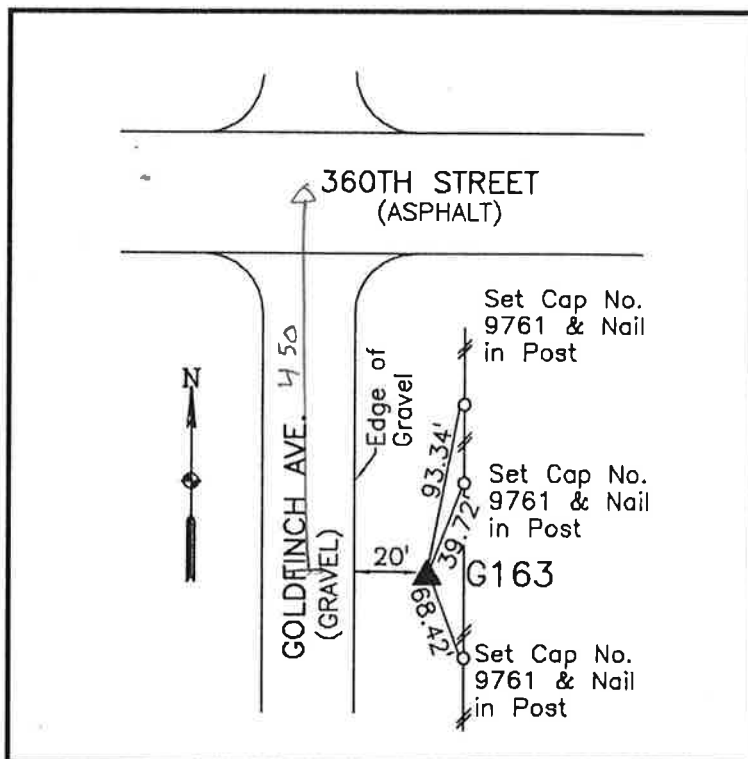
Latitude:	43° 07' 34.81217" N
Longitude:	96° 12' 54.62588" W
Scale Factor:	0.9999773761
Convergence:	-1° 50' 24.7"
Combined Factor:	0.99991210

Description:

Placed 3/4" X 6' - 0" Long Aluminum Rod with Cap Stamped G163 and NGS Style Access Cover 3" Deep

Location:

East side of Goldfinch Avenue 0.1 mile south of 360th Street in Section 19, T96N, R45W.



WHKS & CO.