

**SIOUX COUNTY, IOWA  
GPS CONTROL MONUMENT  
IOWA NORTH ZONE (1401)  
HORIZONTAL DATUM - NAD 83 (1996)  
VERTICAL DATUM - NAVD 1988**

GPS POINT NUMBER      **G164**

	US SURVEY FEET	METRIC
Northing:	3884535.522	1184008.795
Easting:	4212082.257	1283845.240
Elevation:	1411.835	430.328
Ellipsoid Height:	1324.951	403.846
Geoid 99 Height:	-86.884	-26.482

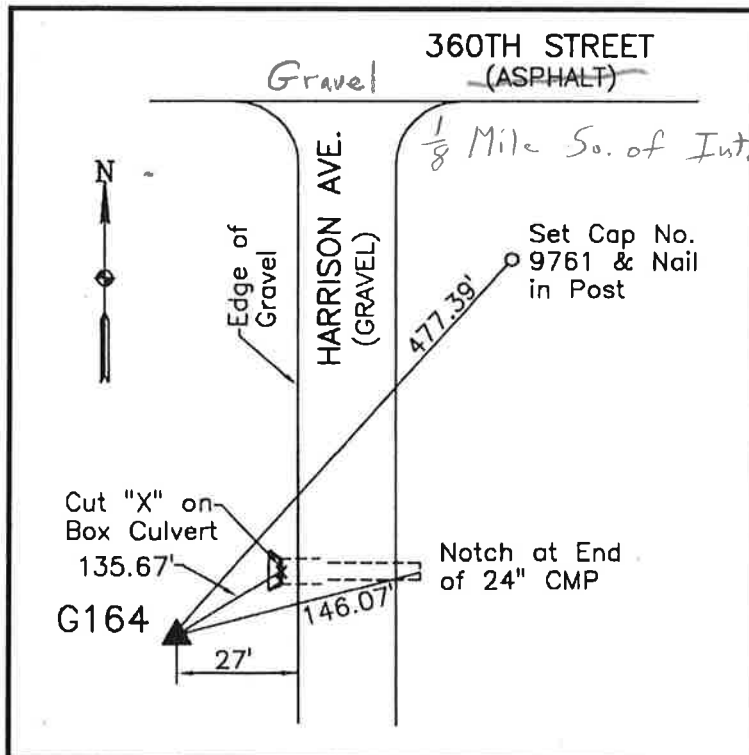
Latitude:	43° 07' 33.51349" N
Longitude:	96° 09' 24.49380" W
Scale Factor:	0.9999773257
Convergence:	-1° 48' 02.3"
Combined Factor:	0.99991411

**Description:**

Placed 3/4" X 6' - 0" Long  
Aluminum Rod with Cap  
Stamped G164 and NGS Style  
Access Cover 2" Deep

**Location:**

West side of Harrison Avenue  
0.15 mile south of 360th Street  
in Section 21, T96N, R45W.



**WHKS & CO.**