

**SIOUX COUNTY, IOWA
GPS CONTROL MONUMENT
IOWA NORTH ZONE (1401)
HORIZONTAL DATUM - NAD 83 (1996)
VERTICAL DATUM - NAVD 1988**

GPS POINT NUMBER **G165**

	US SURVEY FEET	METRIC
Northing:	3884867.161	1184109.879
Easting:	4227667.353	1288595.586
Elevation:	1378.669	420.219
Ellipsoid Height:	1291.539	393.662
Geoid 99 Height:	-87.130	-26.557

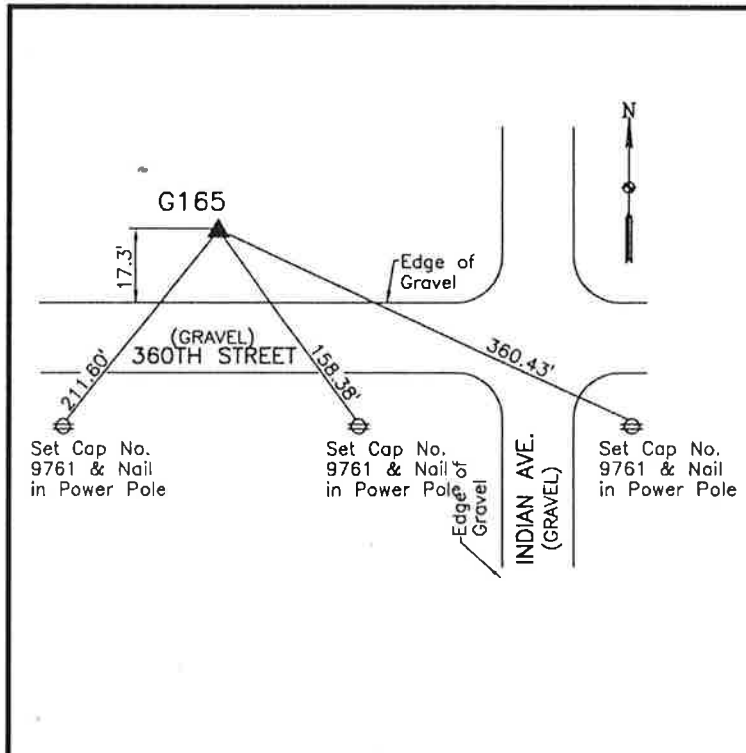
Latitude:	43° 07' 41.57147" N
Longitude:	96° 05' 54.57003" W
Scale Factor:	0.9999776390
Convergence:	-1° 45' 40.0"
Combined Factor:	0.99991602

Description:

Placed 3/4" X 6" - 0" Long
Aluminum Rod with Cap
Stamped G165 and NGS Style
Access Cover 1" Deep

Location:

North side of 360th Street 0.1
mile west of Indian Avenue in
Section 13, T96N, R45W.



WHKS & CO.