

SIoux COUNTY, IOWA
GPS CONTROL MONUMENT
IOWA NORTH ZONE (1401)
HORIZONTAL DATUM - NAD 83 (1996)
VERTICAL DATUM - NAVD 1988

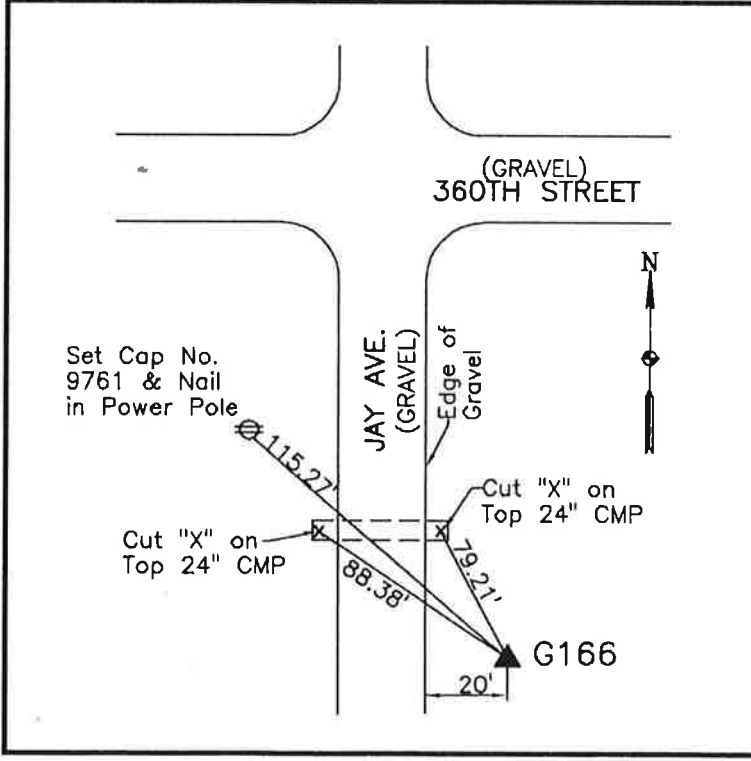
GPS POINT NUMBER **G166**

	US SURVEY FEET	METRIC
Northing:	3883859.574	1183802.766
Easting:	4243683.173	1293477.218
Elevation:	1401.382	427.142
Ellipsoid Height:	1313.992	400.506
Geoid 99 Height:	-87.390	-26.637

Latitude:	43° 07' 36.42936" N
Longitude:	96° 02' 18.28299" W
Scale Factor:	0.9999774389
Convergence:	-1° 43' 13.4"
Combined Factor:	0.99991475

Description:
 Placed 3/4" X 6' - 0" Long
 Aluminum Rod with Cap
 Stamped G166 and NGS Style
 Access Cover 2" Deep

Location:
 East side of Jay Avenue 0.1
 mile south of 360th Street in
 Section 22, T96N, R44W.



WHKS & CO.