

**SIOUX COUNTY, IOWA
GPS CONTROL MONUMENT
IOWA NORTH ZONE (1401)
HORIZONTAL DATUM - NAD 83 (1996)
VERTICAL DATUM - NAVD 1988**

GPS POINT NUMBER **G167**

	US SURVEY FEET	METRIC
Northing:	3883686.480	1183750.006
Easting:	4259489.801	1298295.088
Elevation:	1420.893	433.089
Ellipsoid Height:	1333.216	406.365
Geoid 99 Height:	-87.677	-26.724

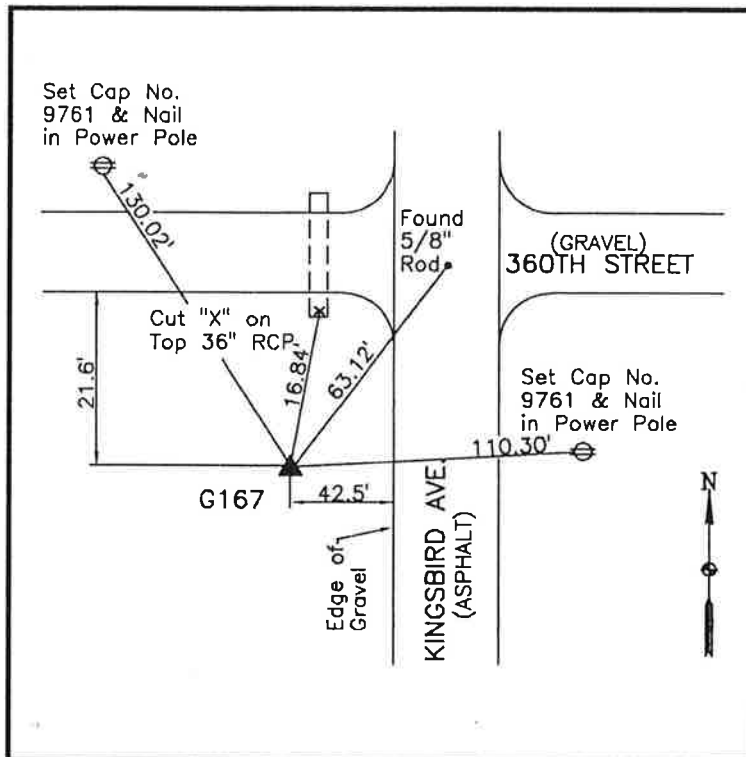
Latitude:	43° 07' 39.35297" N
Longitude:	95° 58' 45.15565" W
Scale Factor:	0.9999775526
Convergence:	-1° 40' 49.0"
Combined Factor:	0.99991395

Description:

Placed 3/4" X 6' - 0" Long Aluminum Rod with Cap Stamped G167 and NGS Style Access Cover 2" Deep

Location:

Southwest corner of intersection of 360th street and Kingbird Avenue in Section 24, T96N, R44W.



WHKS & CO.