

**SIOUX COUNTY, IOWA
GPS CONTROL MONUMENT
IOWA NORTH ZONE (1401)
HORIZONTAL DATUM - NAD 83 (1996)
VERTICAL DATUM - NAVD 1988**

GPS POINT NUMBER **G168**

	US SURVEY FEET	METRIC
Northing:	3883151.261	1183586.871
Easting:	4275361.891	1303132.911
Elevation:	1393.180	424.642
Ellipsoid Height:	1305.180	397.820
Geoid 99 Height:	-88.000	-26.823

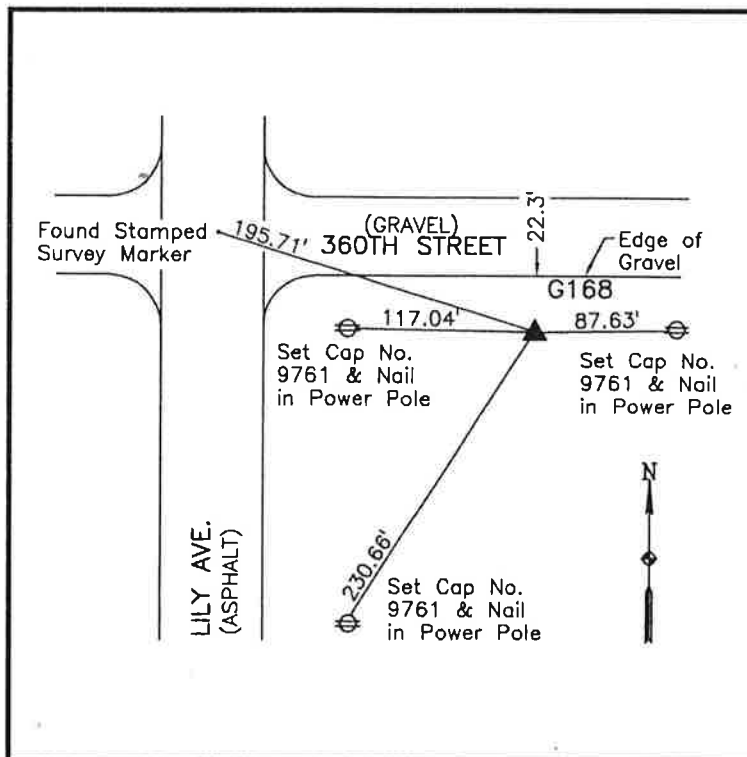
Latitude:	43° 07' 38.61047" N
Longitude:	95° 55' 11.00064" W
Scale Factor:	0.9999775237
Convergence:	-1° 38' 23.8"
Combined Factor:	0.99991525

Description:

Placed 3/4" X 6' - 0" Long
Aluminum Rod with Cap
Stamped G168 and NGS Style
Access Cover 1" Deep

Location:

South side of 360th Street just
east of Lily Avenue in Section
22, T96N, R43W.



WHKS & CO.