

**SIOUX COUNTY, IOWA
GPS CONTROL MONUMENT
IOWA NORTH ZONE (1401)
HORIZONTAL DATUM - NAD 83 (1996)
VERTICAL DATUM - NAVD 1988**

GPS POINT NUMBER **G169**

	US SURVEY FEET	METRIC
Northing:	3882719.082	1183455.143
Easting:	4290365.827	1307706.119
Elevation:	1422.317	433.523
Ellipsoid Height:	1333.985	406.599
Geoid 99 Height:	-88.333	-26.924

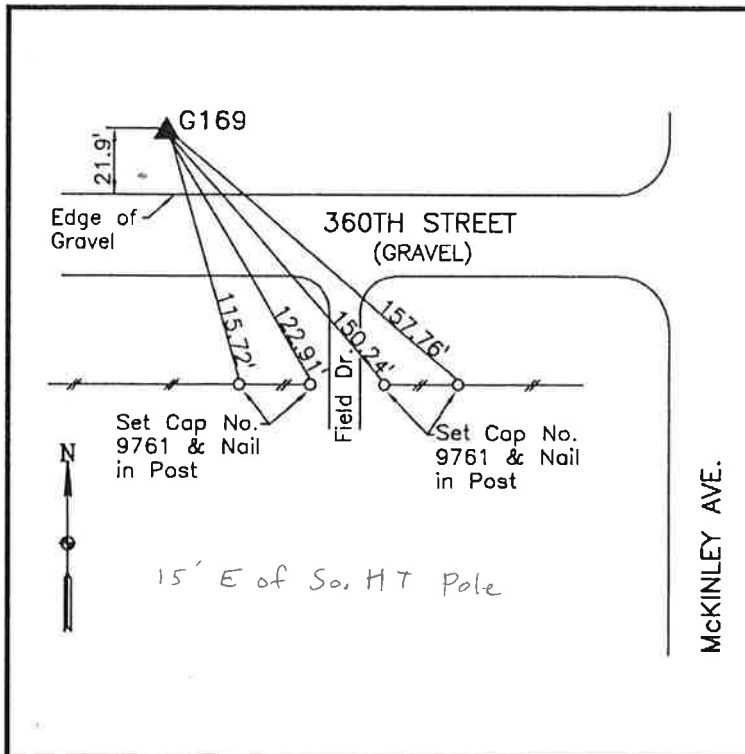
Latitude:	43° 07' 38.53540" N
Longitude:	95° 51' 48.58848" W
Scale Factor:	0.9999775208
Convergence:	-1° 36' 06.6"
Combined Factor:	0.99991388

Description:

Placed 3/4" X 6' - 0" Long
Aluminum Rod with Cap
Stamped G169 and NGS Style
Access Cover 1" Deep

Location:

North side of 360th Street 0.1
mile west of McKinley Avenue
in Section 13, T96N, R43W.



WHKS & CO.