

**SIOUX COUNTY, IOWA
GPS CONTROL MONUMENT
IOWA NORTH ZONE (1401)
HORIZONTAL DATUM - NAD 83 (1996)
VERTICAL DATUM - NAVD 1988**

GPS POINT NUMBER **G170**

| | US SURVEY FEET | METRIC |
|-------------------|----------------|-------------|
| Northing: | 3898819.891 | 1188362.680 |
| Easting: | 4289698.315 | 1307502.661 |
| Elevation: | 1379.800 | 420.564 |
| Ellipsoid Height: | 1291.563 | 393.669 |
| Geoid 99 Height: | -88.237 | -26.895 |

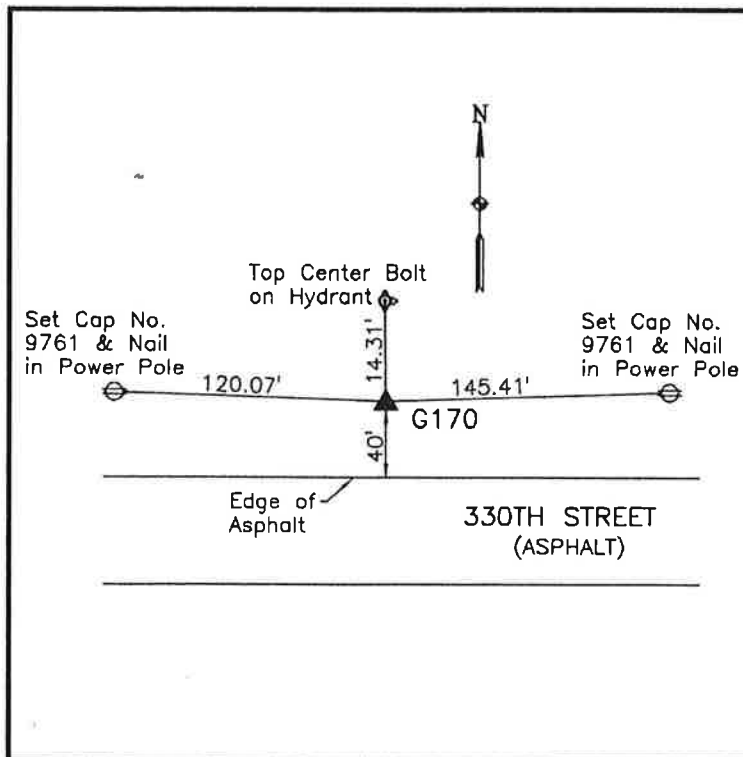
| | |
|------------------|---------------------|
| Latitude: | 43° 10' 17.31805" N |
| Longitude: | 95° 52' 03.66644" W |
| Scale Factor: | 0.9999839958 |
| Convergence: | -1° 36' 16.9" |
| Combined Factor: | 0.99992238 |

Description:

Placed 3/4" X 6' - 0" Long Aluminum Rod with Cap Stamped G170 and NGS Style Access Cover 1" Deep

Location:

North side 330th Street 0.35 mile west of McKinley Avenue east county line in Section 36, T97N, R43W.



WHKS & CO.