

**SIoux COUNTY, IOWA
GPS CONTROL MONUMENT
IOWA NORTH ZONE (1401)
HORIZONTAL DATUM - NAD 83 (1996)
VERTICAL DATUM - NAVD 1988**

GPS POINT NUMBER **G171**

	US SURVEY FEET	METRIC
Northing:	3899259.787	1188496.760
Easting:	4275661.264	1303224.160
Elevation:	1420.379	432.932
Ellipsoid Height:	1332.431	406.126
Geoid 99 Height:	-87.947	-26.806

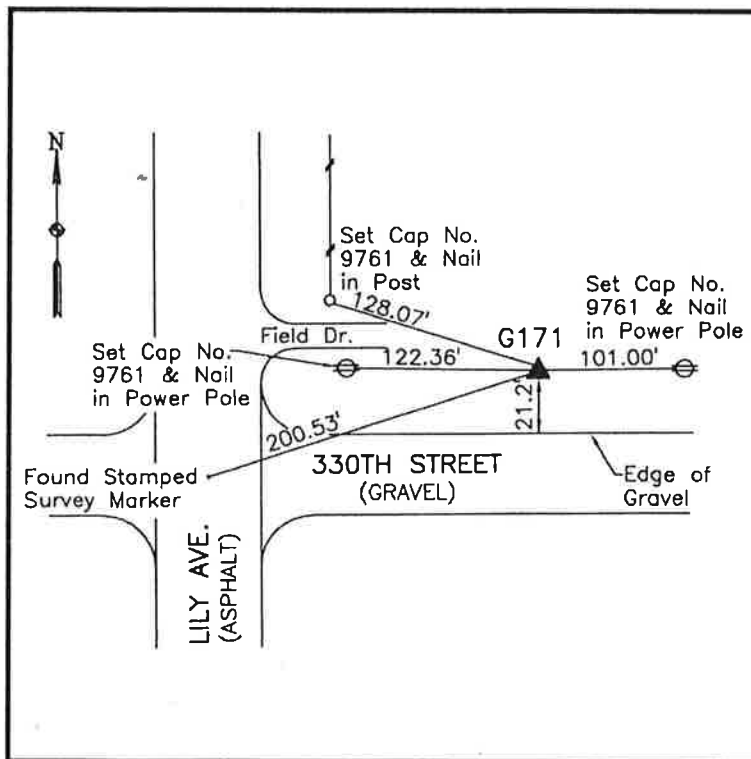
Latitude:	43° 10' 17.73551" N
Longitude:	95° 55' 13.18346" W
Scale Factor:	0.9999840136
Convergence:	-1° 38' 25.3"
Combined Factor:	0.99992044

Description:

Placed 3/4" X 6' - 0" Long Aluminum Rod with Cap Stamped G171 and NGS Style Access Cover 3" Deep

Location:

Northeast side of intersection of Lily Avenue and 330th Street in Section 34, T97N, R43W.



WHKS & CO.