

SIOUX COUNTY, IOWA
GPS CONTROL MONUMENT
IOWA NORTH ZONE (1401)
HORIZONTAL DATUM - NAD 83 (1996)
VERTICAL DATUM - NAVD 1988

GPS POINT NUMBER **G172**

	US SURVEY FEET	METRIC
Northing:	3900077.644	1188746.043
Easting:	4259803.038	1298390.563
Elevation:	1446.405	440.865
Ellipsoid Height:	1358.739	414.145
Geoid 99 Height:	-87.666	-26.721

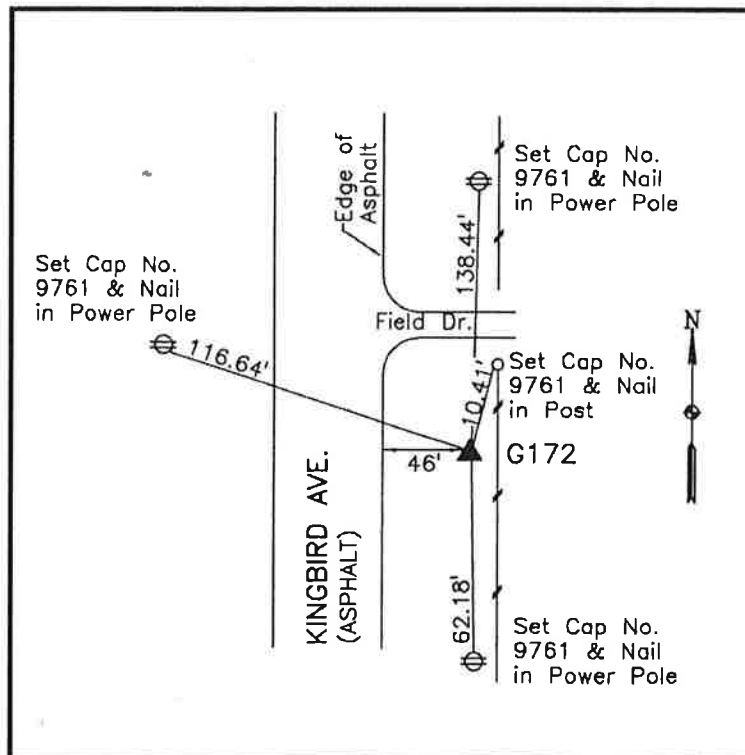
Latitude: 43° 10' 21.27128" N
Longitude: 95° 58' 47.41631" W
Scale Factor: 0.9999841646
Convergence: -1° 40' 50.5"
Combined Factor: 0.99991934

Description:

Placed 3/4" X 6' - 0" Long
Aluminum Rod with Cap
Stamped G172 and NGS Style
Access Cover 2" Deep

Location:

East side of Kingbird Avenue
0.05 mile north of 330th Street
in Section 31, T97N, R44W.



WHKS & CO.