

**SIOUX COUNTY, IOWA
GPS CONTROL MONUMENT
IOWA NORTH ZONE (1401)
HORIZONTAL DATUM - NAD 83 (1996)
VERTICAL DATUM - NAVD 1988**

GPS POINT NUMBER **G173**

	US SURVEY FEET	METRIC
Northing:	3900195.205	1188781.876
Easting:	4244073.704	1293596.252
Elevation:	1380.257	420.703
Ellipsoid Height:	1292.823	394.053
Geoid 99 Height:	-87.434	-26.650

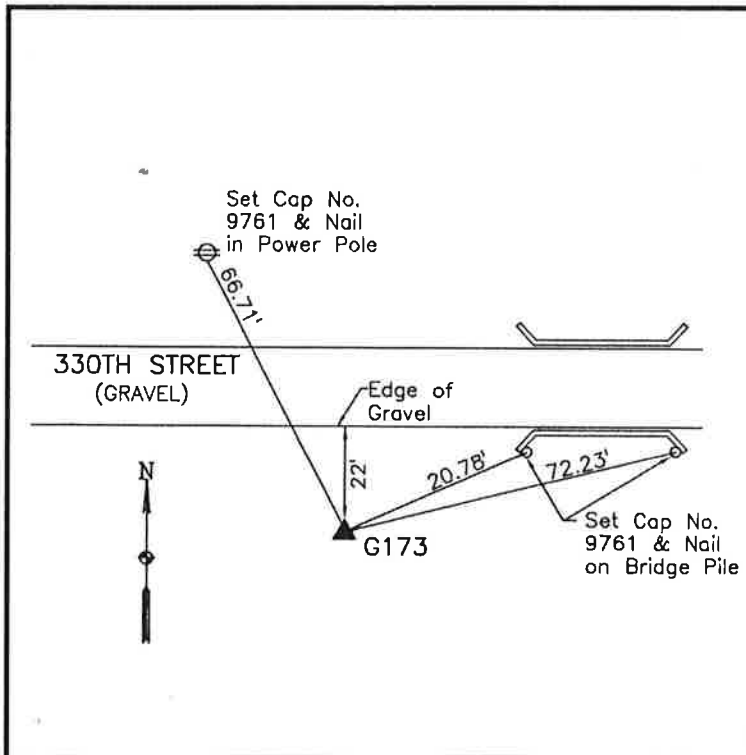
Latitude:	43° 10' 17.82118" N
Longitude:	96° 02' 19.63345" W
Scale Factor:	0.9999840173
Convergence:	-1° 43' 14.3"
Combined Factor:	0.99992234

Description:

Placed 3/4" X 6' - 0" Long
Aluminum Rod with Cap
Stamped G173 and NGS Style
Access Cover 1" Deep

Location:

Southeast side of intersection
of Jay Avenue and 330th
Street in Section 3, T96N,
R44W.



WHKS & CO.