

**SIOUX COUNTY, IOWA
GPS CONTROL MONUMENT
IOWA NORTH ZONE (1401)
HORIZONTAL DATUM - NAD 83 (1996)
VERTICAL DATUM - NAVD 1988**

GPS POINT NUMBER **G174**

	US SURVEY FEET	METRIC
Northing:	3900567.733	1188895.423
Easting:	4227983.567	1288691.969
Elevation:	1392.882	424.551
Ellipsoid Height:	1305.695	397.976
Geoid 99 Height:	-87.188	-26.575

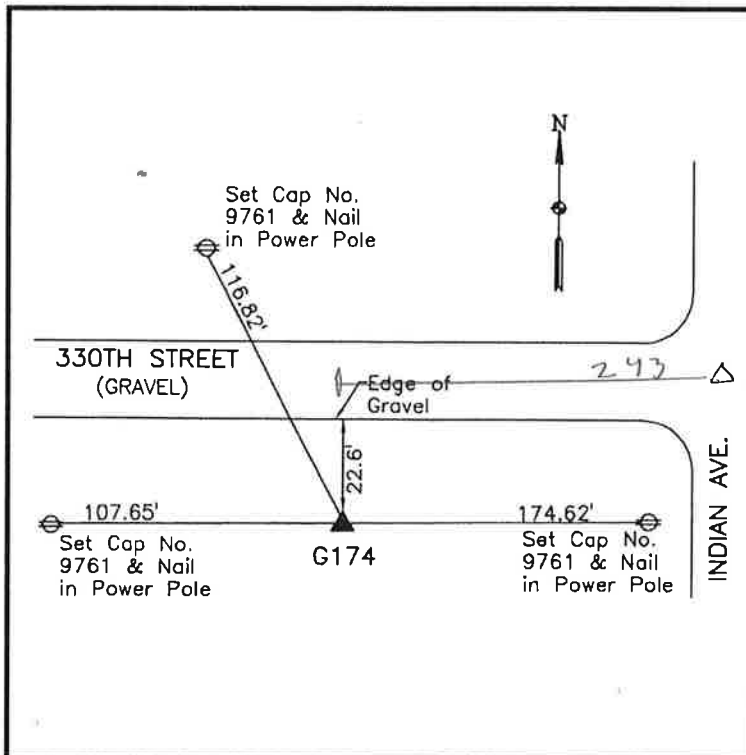
Latitude:	43° 10' 16.67038" N
Longitude:	96° 05' 56.81623" W
Scale Factor:	0.9999839682
Convergence:	-1° 45' 41.5"
Combined Factor:	0.99992167

Description:

Placed 3/4" X 6' - 0" Long Aluminum Rod with Cap Stamped G174 and NGS Style Access Cover 1" Deep

Location:

South side of 330th Street 0.05 mile west of Indian Avenue in Section 1, T97N, R45W.



WHKS & CO.