

**SIOUX COUNTY, IOWA  
GPS CONTROL MONUMENT  
IOWA NORTH ZONE (1401)  
HORIZONTAL DATUM - NAD 83 (1996)  
VERTICAL DATUM - NAVD 1988**

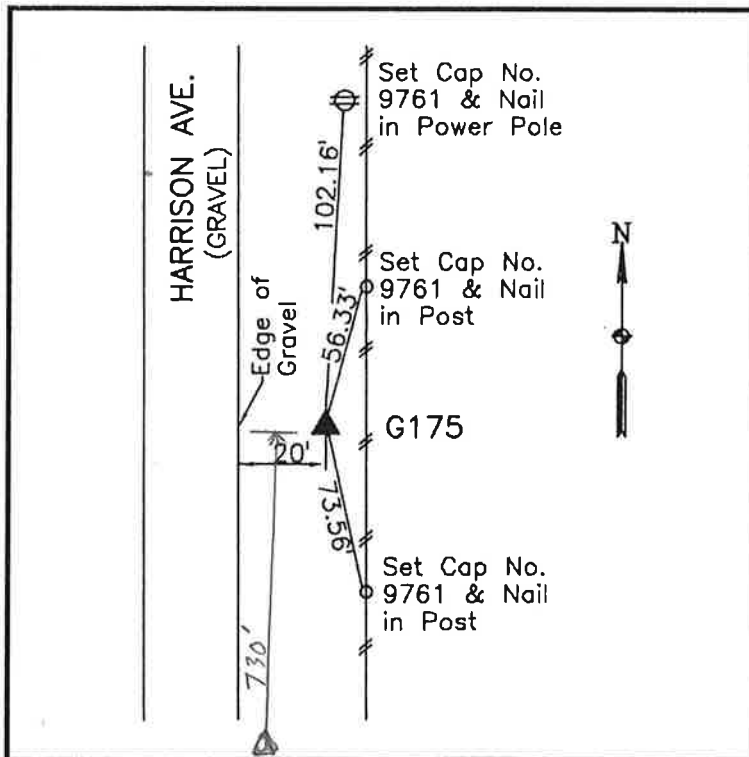
GPS POINT NUMBER **G175**

	US SURVEY FEET	METRIC
Northing:	3901774.233	1189263.165
Easting:	4212445.525	1283955.964
Elevation:	1469.601	447.935
Ellipsoid Height:	1382.632	421.427
Geoid 99 Height:	-86.969	-26.508

Latitude:	43° 10' 23.81070" N
Longitude:	96° 09' 26.90378" W
Scale Factor:	0.9999842733
Convergence:	-1° 48' 03.9"
Combined Factor:	0.99991831

Description:  
Placed 3/4" X 6' - 0" Long  
Aluminum Rod with Cap  
Stamped G175 and NGS Style  
Access Cover 1" Deep

Location:  
East side of Harrison Avenue  
0.15 mile north of 330th Street  
in Section 34, T97N, R45W.



**WHKS & CO.**