

**SIOUX COUNTY, IOWA
GPS CONTROL MONUMENT
IOWA NORTH ZONE (1401)
HORIZONTAL DATUM - NAD 83 (1996)
VERTICAL DATUM - NAVD 1988**

GPS POINT NUMBER **G176**

	US SURVEY FEET	METRIC
Northing:	3901528.209	1189188.177
Easting:	4197034.637	1279258.716
Elevation:	1444.559	440.302
Ellipsoid Height:	1357.759	413.846
Geoid 99 Height:	-86.799	-26.456

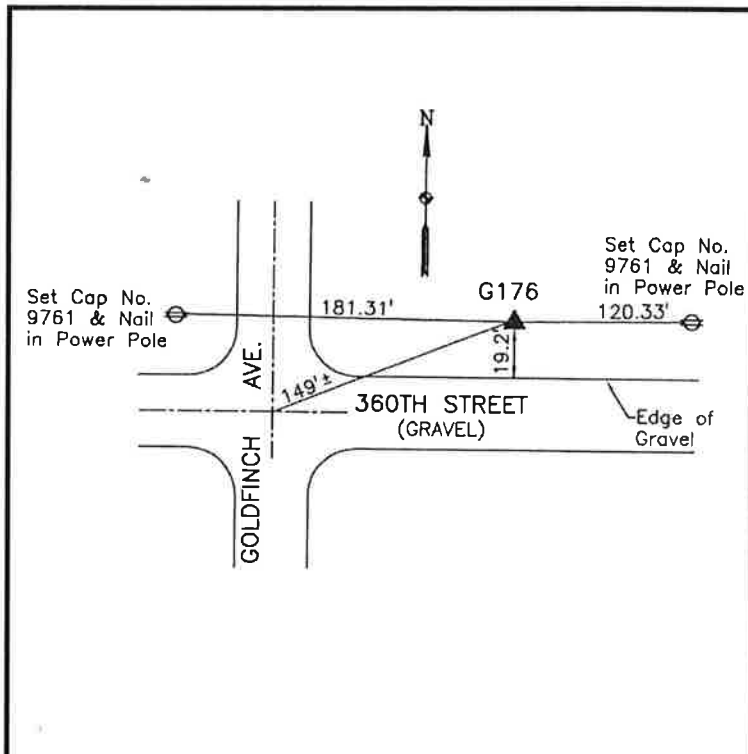
Latitude:	43° 10' 16.54596" N
Longitude:	96° 12' 54.66013" W
Scale Factor:	0.9999839629
Convergence:	-1° 50' 24.7"
Combined Factor:	0.99991918

Description:

Placed 3/4" X 6" - 0" Long
Aluminum Rod with Cap
Stamped G176 and NGS Style
Access Cover 2" Deep

Location:

Northeast side of intersection
of Goldfinch Avenue and 330th
Street in Section 31, T97N,
R45W.



WHKS & CO.