

**SIOUX COUNTY, IOWA
GPS CONTROL MONUMENT
IOWA NORTH ZONE (1401)
HORIZONTAL DATUM - NAD 83 (1996)
VERTICAL DATUM - NAVD 1988**

GPS POINT NUMBER **G177**

	US SURVEY FEET	METRIC
Northing:	3902000.130	1189332.018
Easting:	4181515.649	1274528.519
Elevation:	1421.633	433.315
Ellipsoid Height:	1334.977	406.902
Geoid 99 Height:	-86.656	-26.413

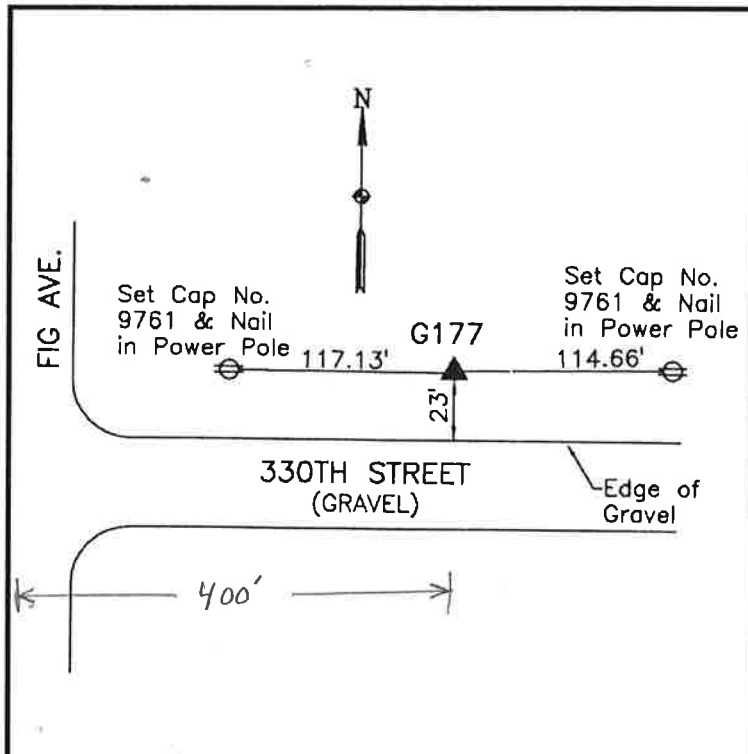
Latitude:	43° 10' 16.22977" N
Longitude:	96° 16' 24.17851" W
Scale Factor:	0.9999839494
Convergence:	-1° 52' 46.7"
Combined Factor:	0.99992026

Description:

Placed 3/4" X 6' - 0" Long Aluminum Rod with Cap Stamped G177 and NGS Style Access Cover 1" Deep

Location:

North side 330th Street 0.05 mile east of Fig Avenue in Section 34, T97N, R46W.



WHKS & CO.